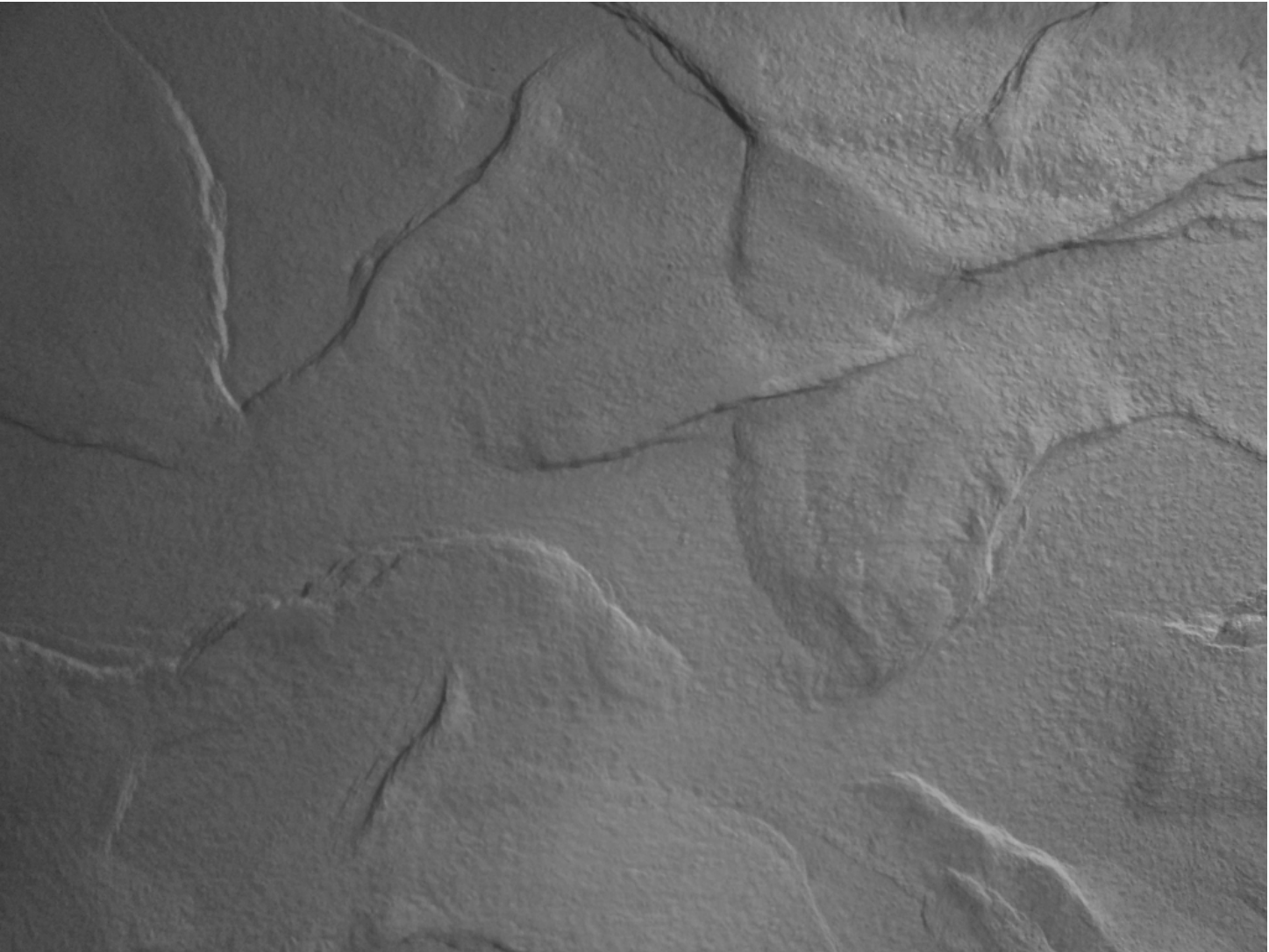
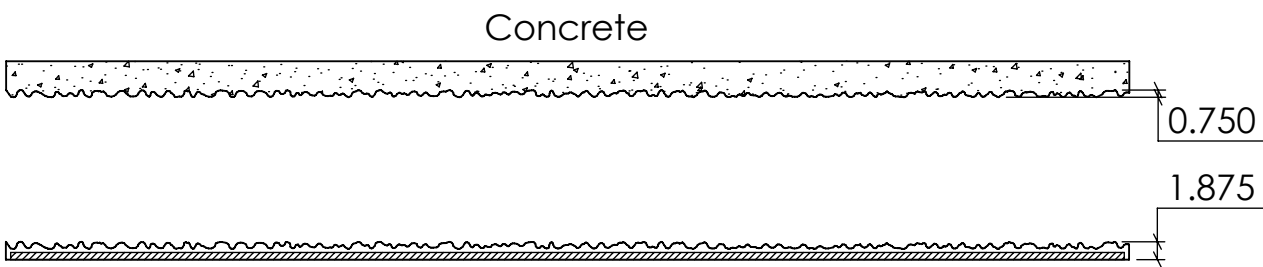
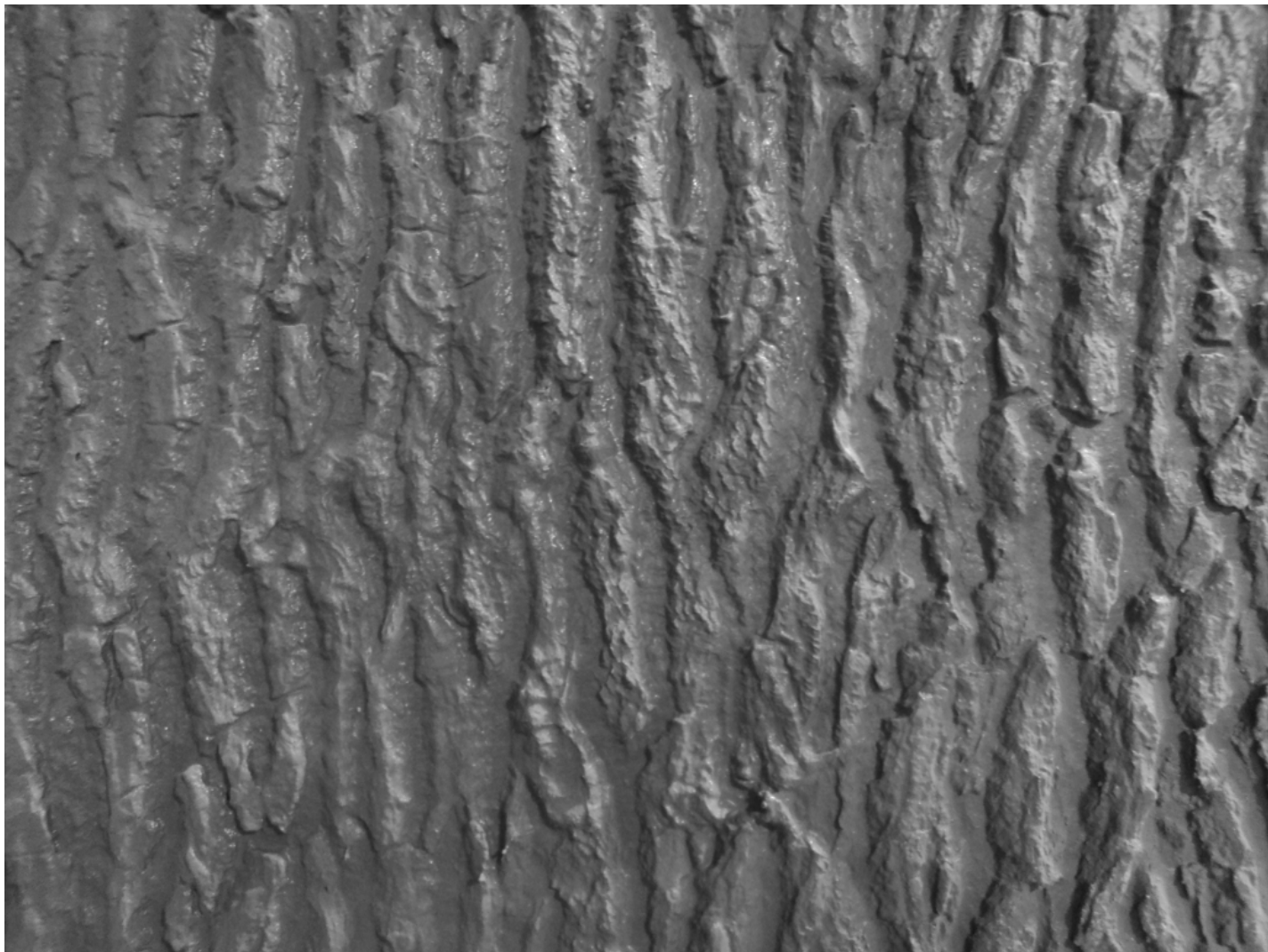
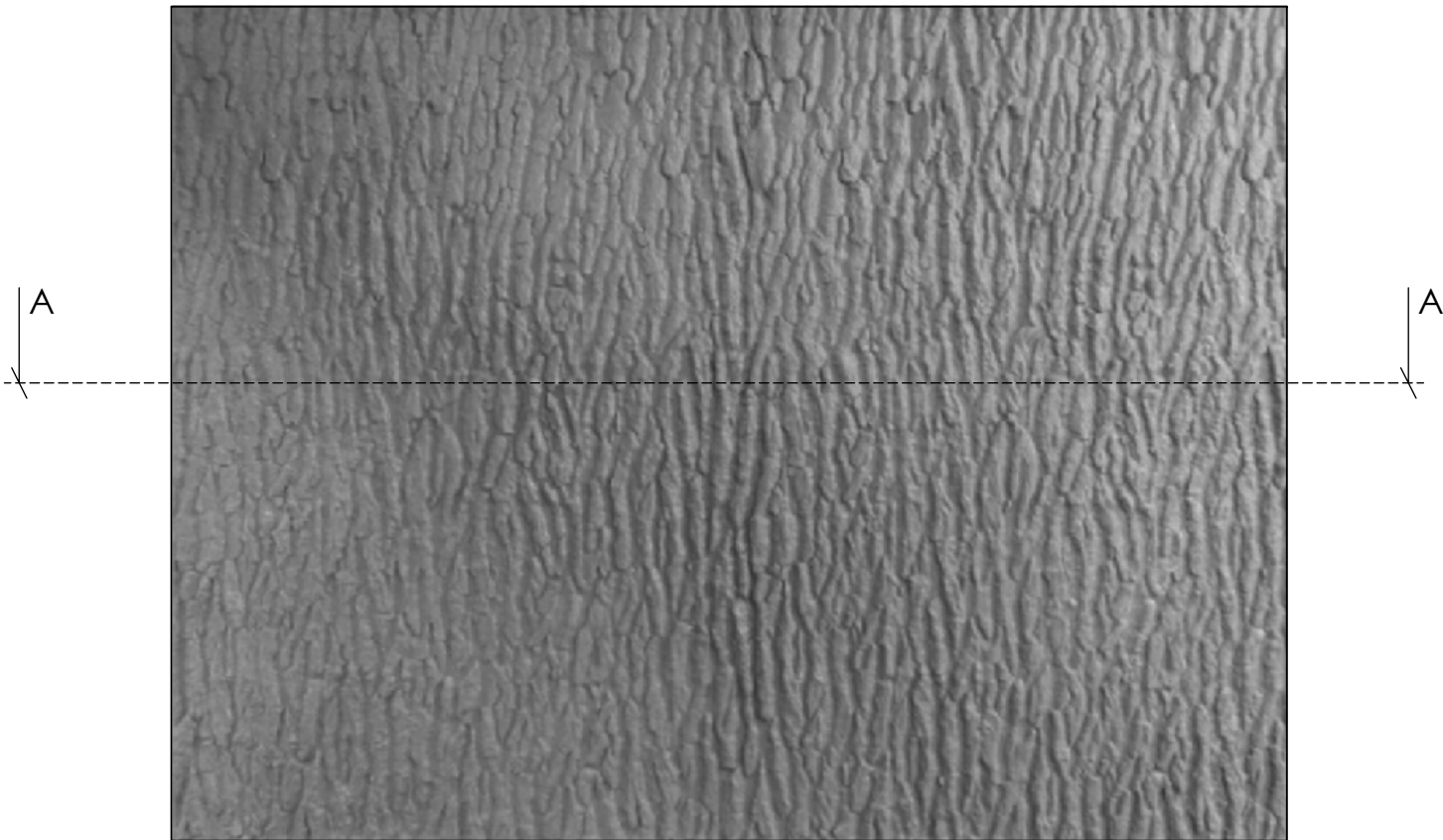


SECTION A-A





Formliner
SECTION A-A

FAST FORMLINERS CO.
1005 Miller Drive, St. Clair, MO 63077
636-322-0080 Phone 636-322-0083 Fax
www.fastformliners.com



DRAWN BY: Petr L. 3/17/2015
PROPRIETARY AND CONFIDENTIAL
THE INFORMATION CONTAINED IN THIS
DRAWING IS THE SOLE PROPERTY OF
FAST FORMLINERS. ANY
REPRODUCTION IN PART OR AS A WHOLE
WITHOUT THE WRITTEN PERMISSION OF
FAST FORMLINERS IS PROHIBITED.

SHEET SIZE
11"x17"
DO NOT
SCALE
SHEET 1 OF 1

16005

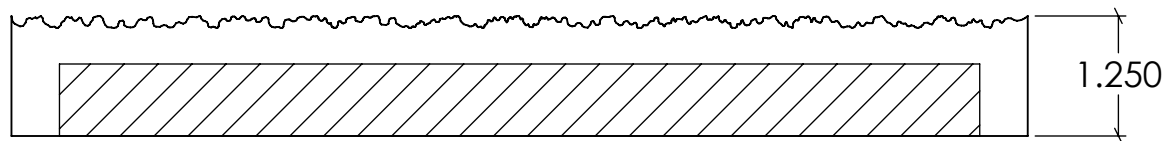
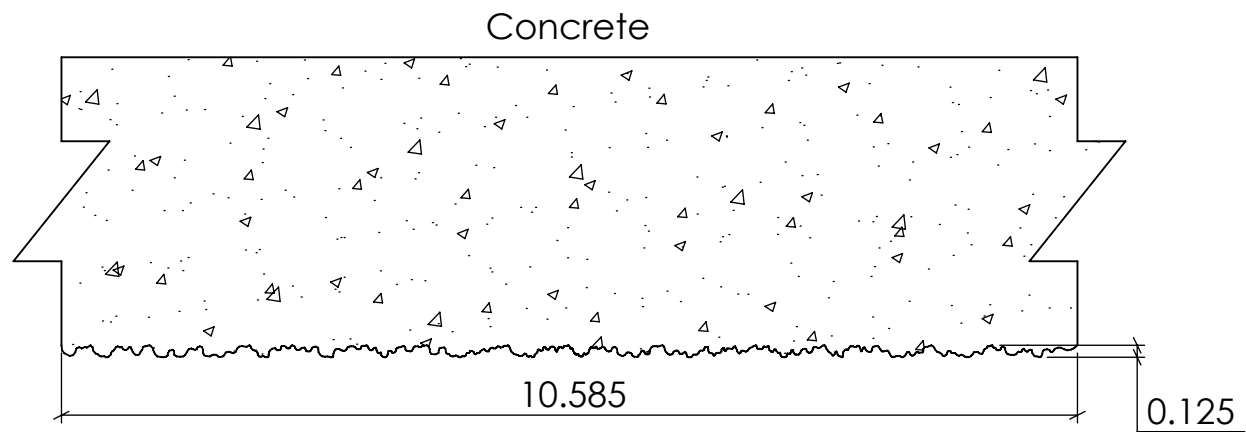
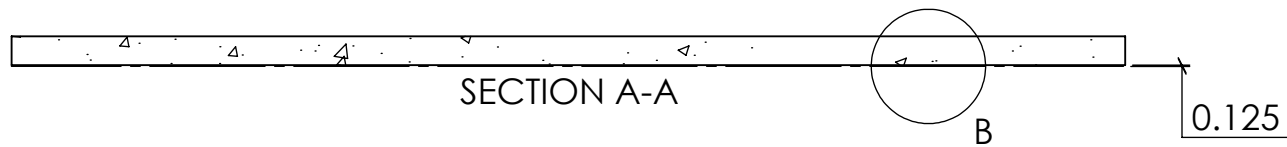
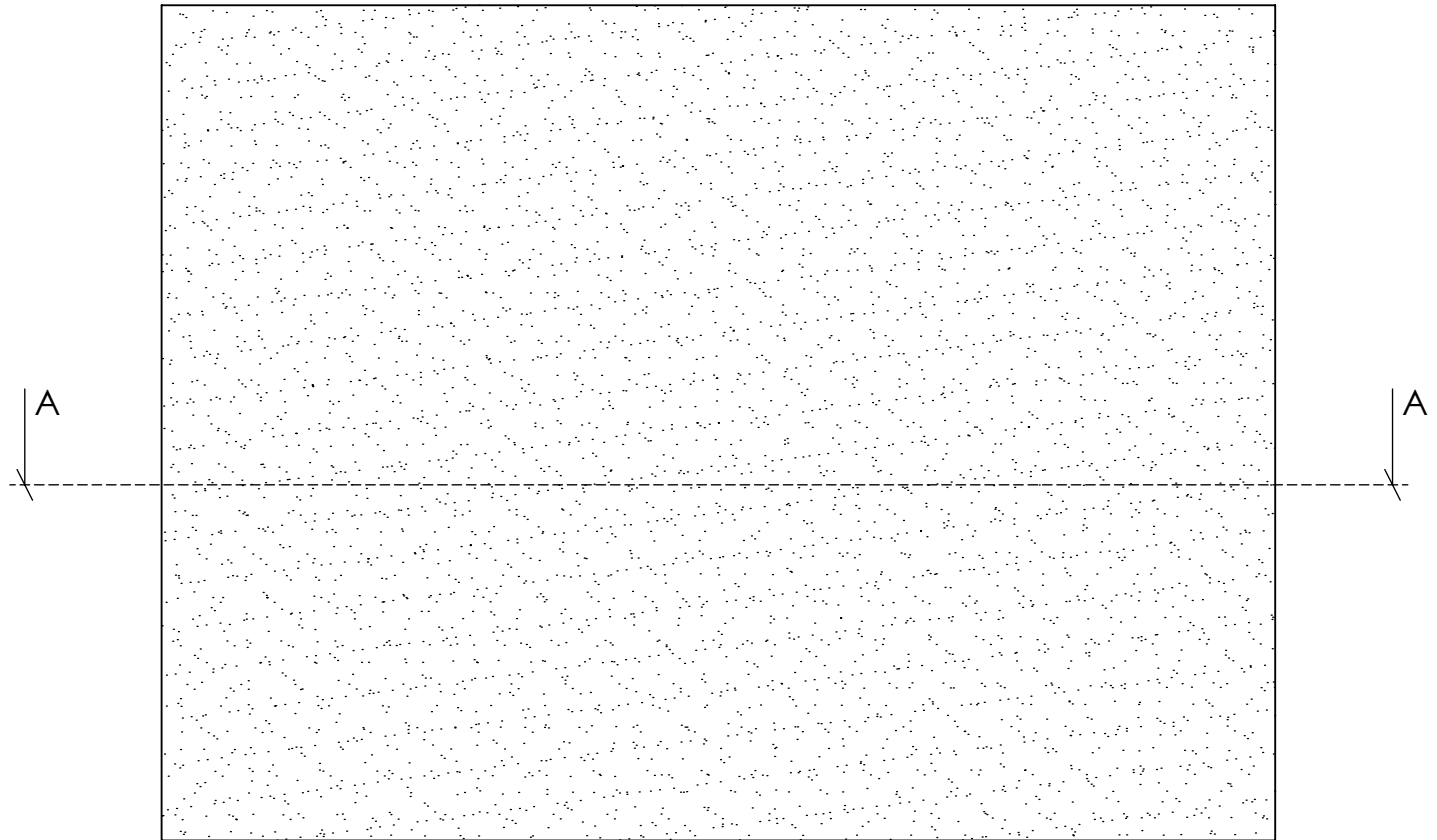
16005Concrete

REV. 4/6/2015

NOTES:

APPROVAL SIGNATURE:

Please provide a signature in this box to indicate that this drawing has been approved and that FAST FORMLINERS may begin production.



FAST FORMLINERS CO.
1005 Miller Drive, St. Clair, MO 63077
636-322-0080 Phone 636-322-0083 Fax
www.fastformliners.com

**Fast
Formliners Co.**

DRAWN BY: Petr L. 3/18/2015
PROPRIETARY AND CONFIDENTIAL
THE INFORMATION CONTAINED IN THIS
DRAWING IS THE SOLE PROPERTY OF
FAST FORMLINERS. ANY
REPRODUCTION IN PART OR AS A WHOLE
WITHOUT THE WRITTEN PERMISSION OF
FAST FORMLINERS IS PROHIBITED.

SHEET SIZE
11"x17"
DO NOT
SCALE
SHEET 1 OF 1

16006

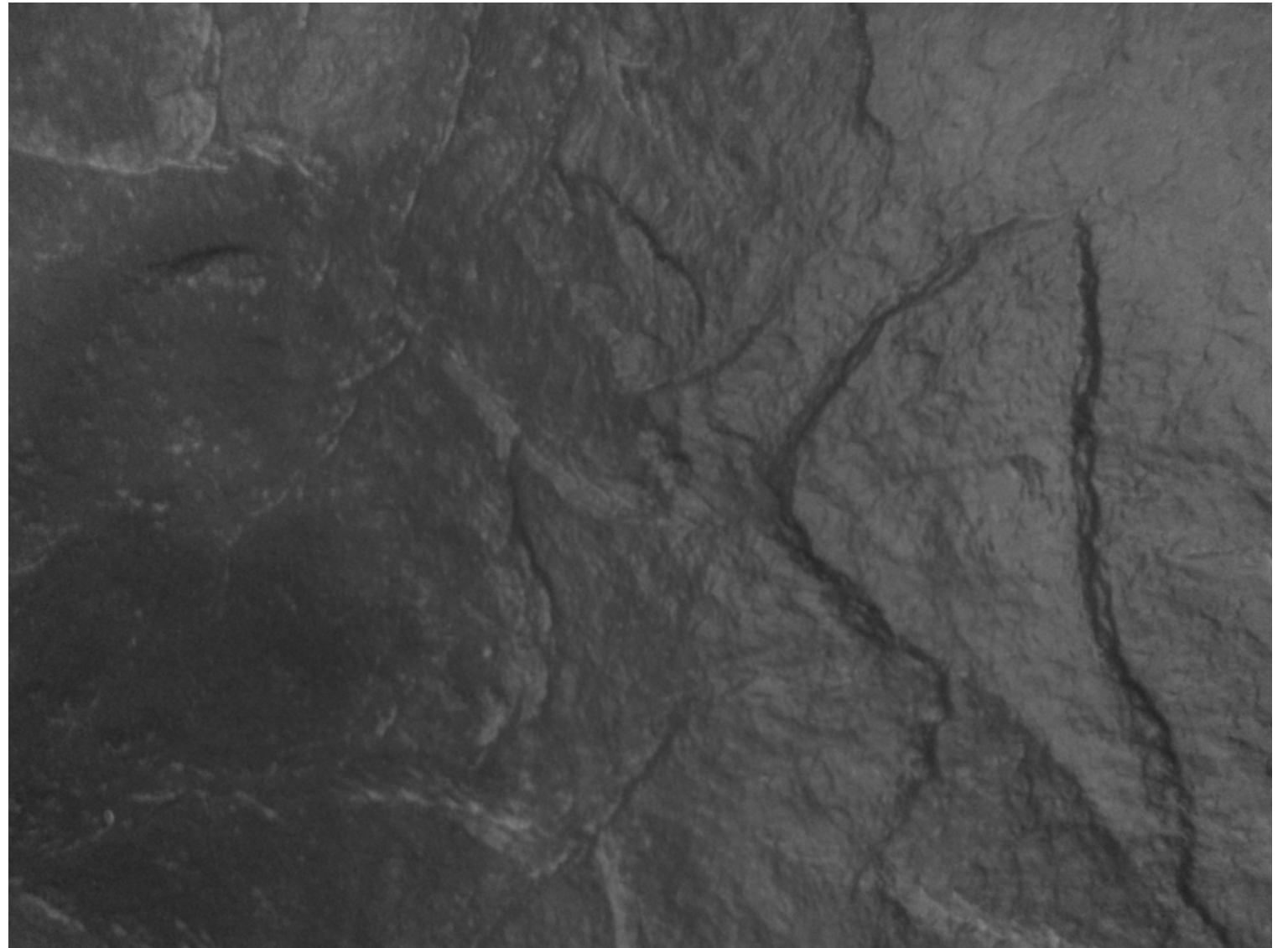
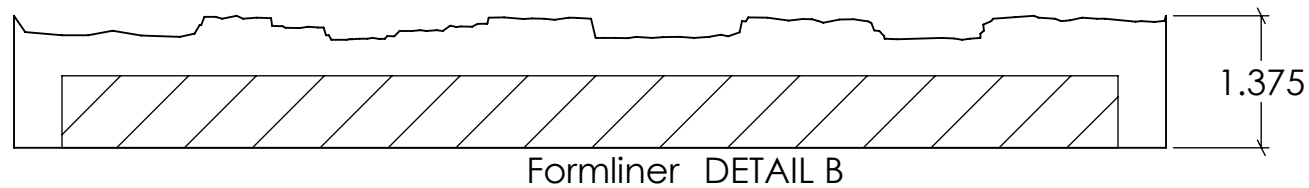
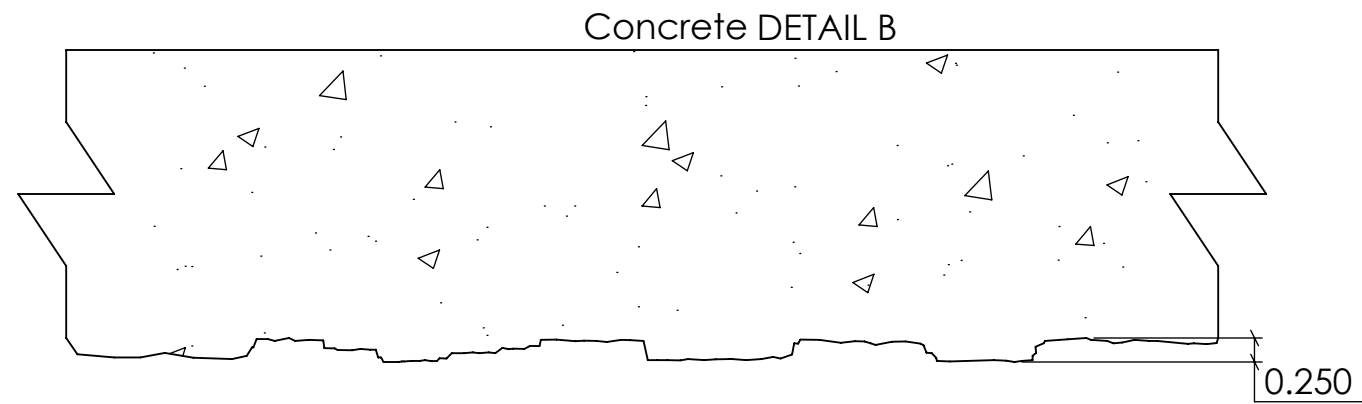
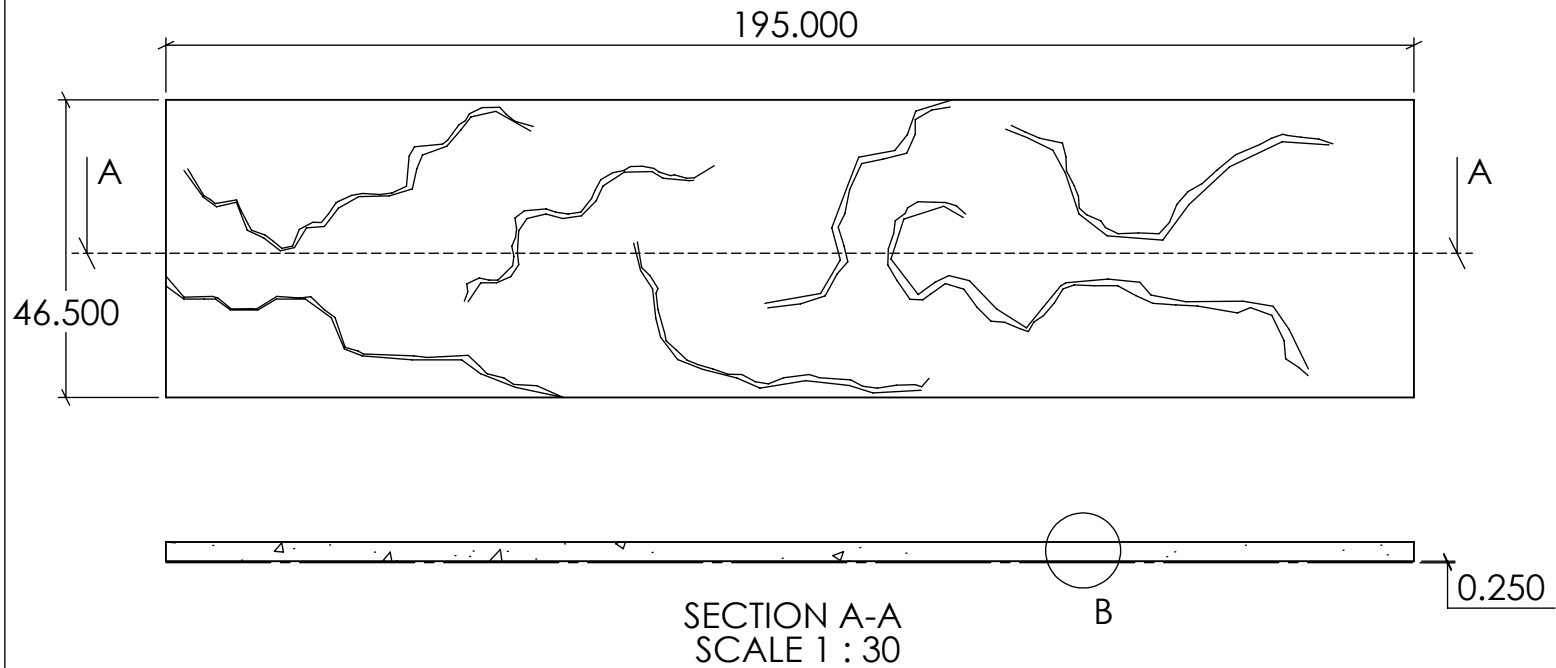
16006Concrete

REV. 4/6/2015

NOTES:

APPROVAL SIGNATURE:

Please provide a signature in this box to indicate that this drawing has been approved and that FAST FORMLINERS may begin production.



FAST FORMLINERS CO.
1005 Miller Drive, St. Clair, MO 63077
636-322-0080 Phone 636-322-0083 Fax
www.fastformliners.com

**Fast
Formliners Co.**

DRAWN BY: Petr L. 3/23/2015
PROPRIETARY AND CONFIDENTIAL
THE INFORMATION CONTAINED IN THIS
DRAWING IS THE SOLE PROPERTY OF
FAST FORMLINERS. ANY
REPRODUCTION IN PART OR AS A WHOLE
WITHOUT THE WRITTEN PERMISSION OF
FAST FORMLINERS IS PROHIBITED.

SHEET SIZE
11"x17"
DO NOT
SCALE
SHEET 1 OF 1

16007

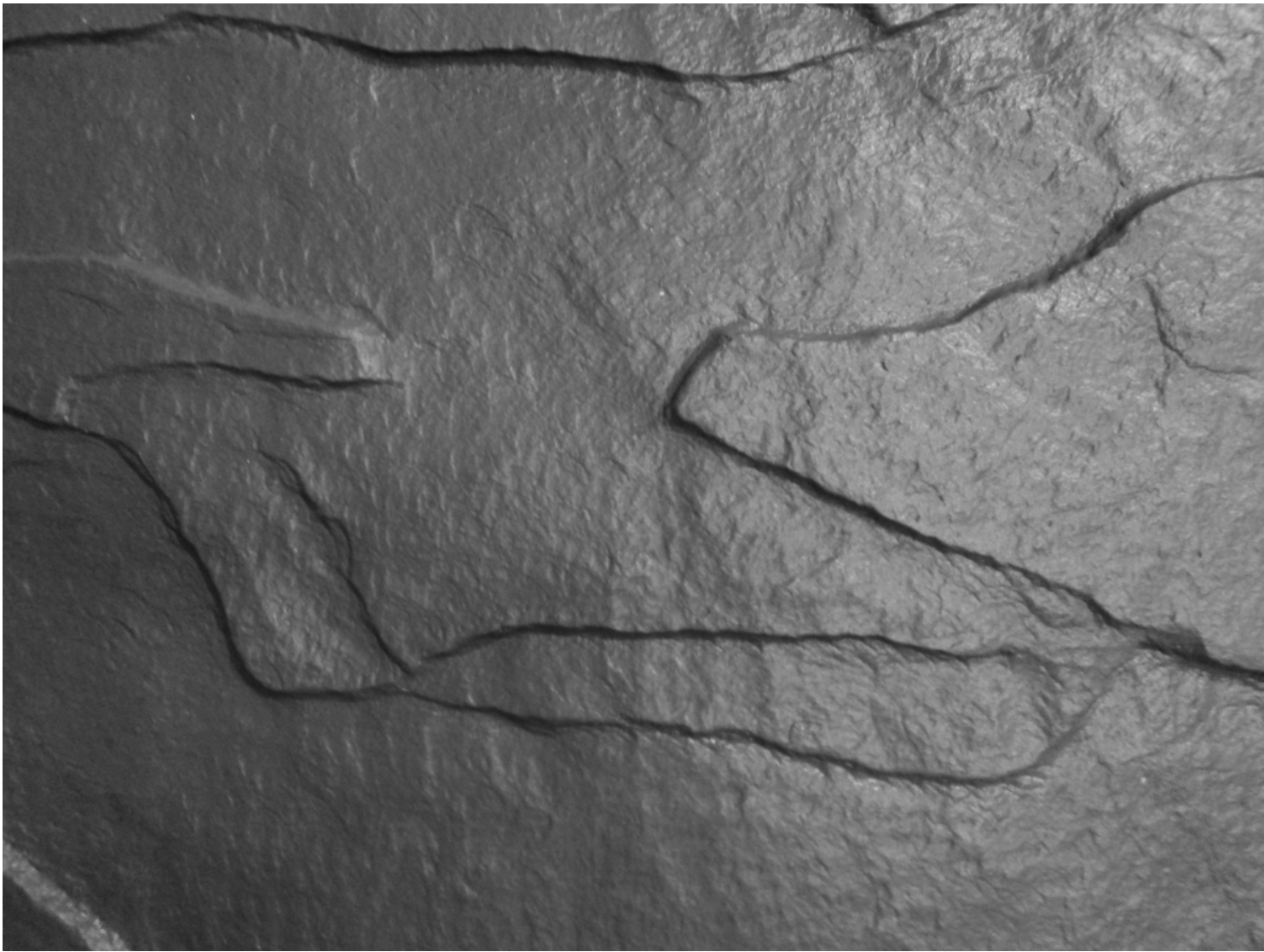
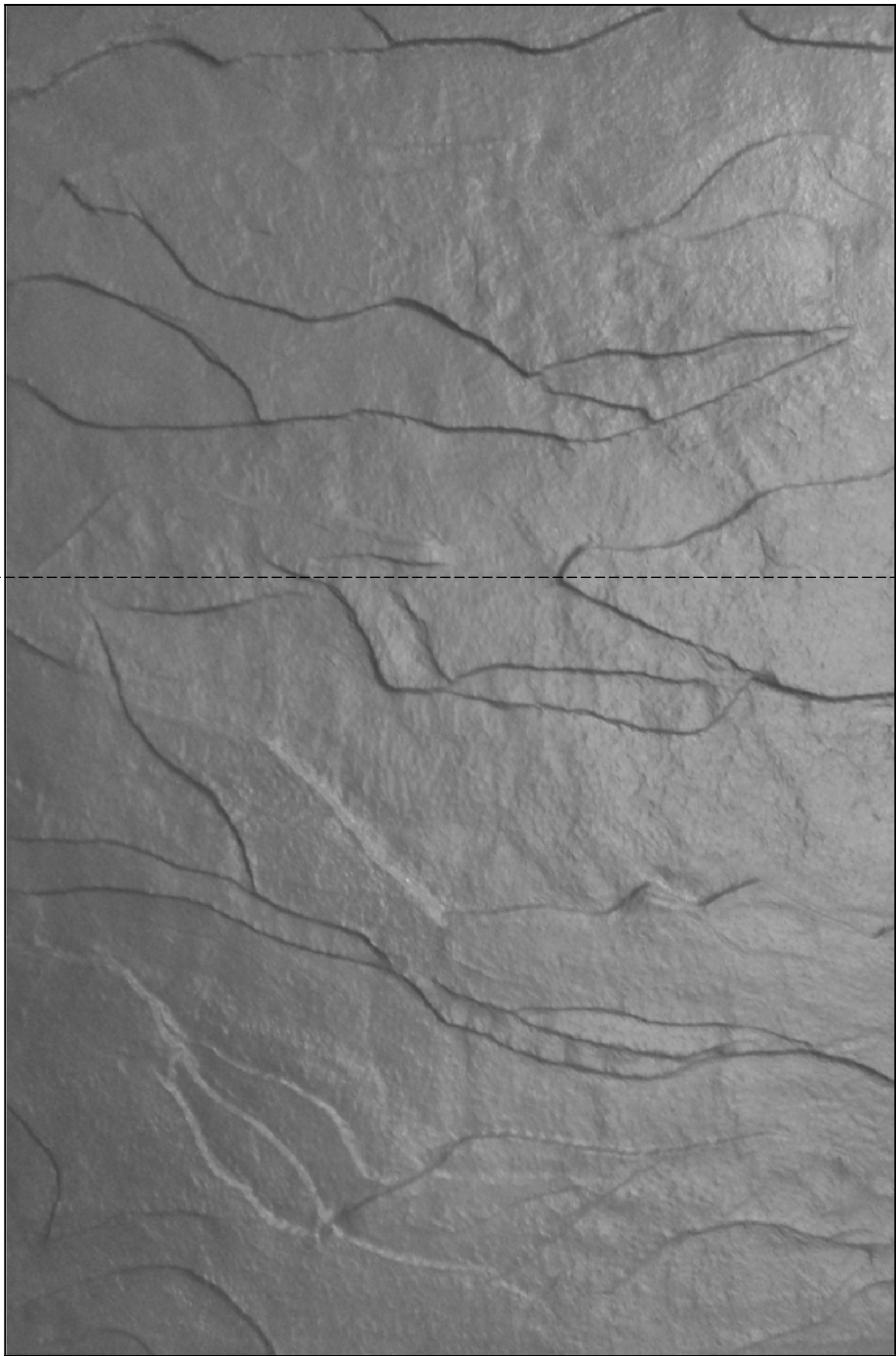
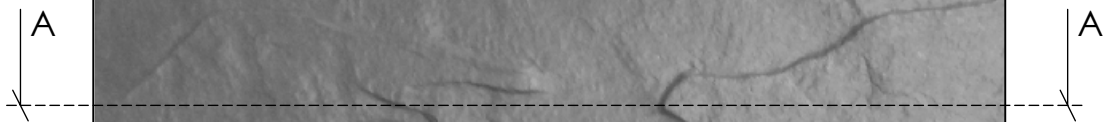
16007Concrete

REV. 4/6/2015

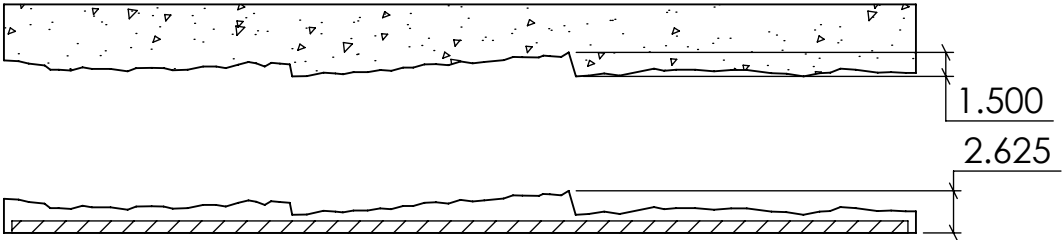
NOTES:

APPROVAL SIGNATURE:

Please provide a signature in this box to indicate that this drawing has been approved and that FAST FORMLINERS may begin production.



Concrete



Formliner

FAST FORMLINERS CO.
1005 Miller Drive, St. Clair, MO 63077
636-322-0080 Phone 636-322-0083 Fax
www.fastformliners.com



DRAWN BY: Petr L. 3/23/2015
PROPRIETARY AND CONFIDENTIAL
THE INFORMATION CONTAINED IN THIS
DRAWING IS THE SOLE PROPERTY OF
FAST FORMLINERS. ANY
REPRODUCTION IN PART OR AS A WHOLE
WITHOUT THE WRITTEN PERMISSION OF
FAST FORMLINERS IS PROHIBITED.

SHEET SIZE:
11"x17"
DO NOT
SCALE
SHEET 1 OF 1

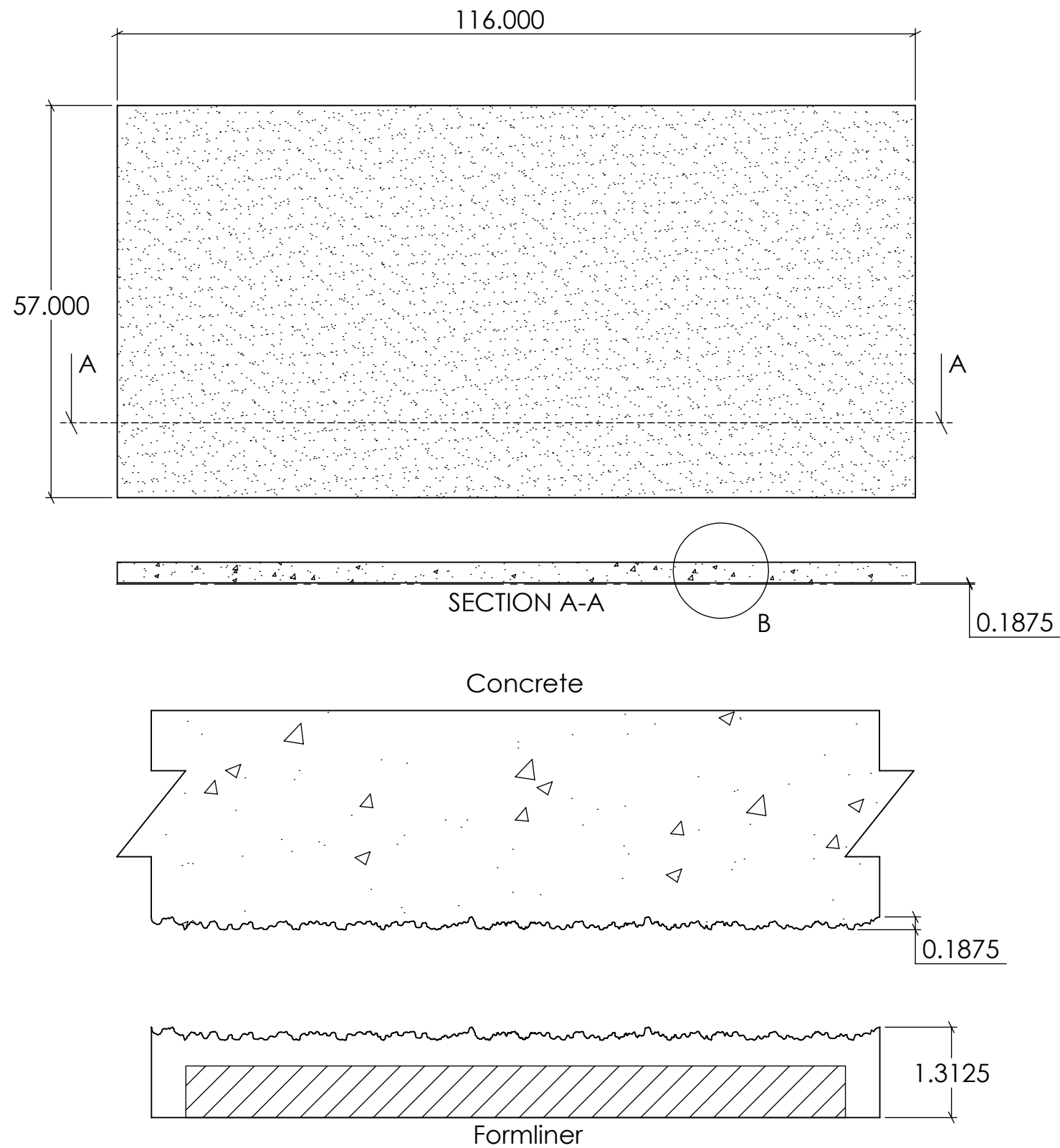
16008

16008Concrete REV. 4/6/2015

NOTES:

APPROVAL SIGNATURE:

Please provide a signature in this box to indicate that this drawing has been approved and that FAST FORMLINERS may begin production.



FAST FORMLINERS CO.
1005 Miller Drive, St. Clair, MO 63077
636-322-0080 Phone 636-322-0083 Fax
www.fastformliners.com

**Fast
Formliners Co.**

DRAWN BY: Petr L. 3/23/2015
PROPRIETARY AND CONFIDENTIAL
THE INFORMATION CONTAINED IN THIS
DRAWING IS THE SOLE PROPERTY OF
FAST FORMLINERS. ANY
REPRODUCTION IN PART OR AS A WHOLE
WITHOUT THE WRITTEN PERMISSION OF
FAST FORMLINERS IS PROHIBITED.

SHEET SIZE
11"x17"
DO NOT
SCALE
SHEET 1 OF 1

16009

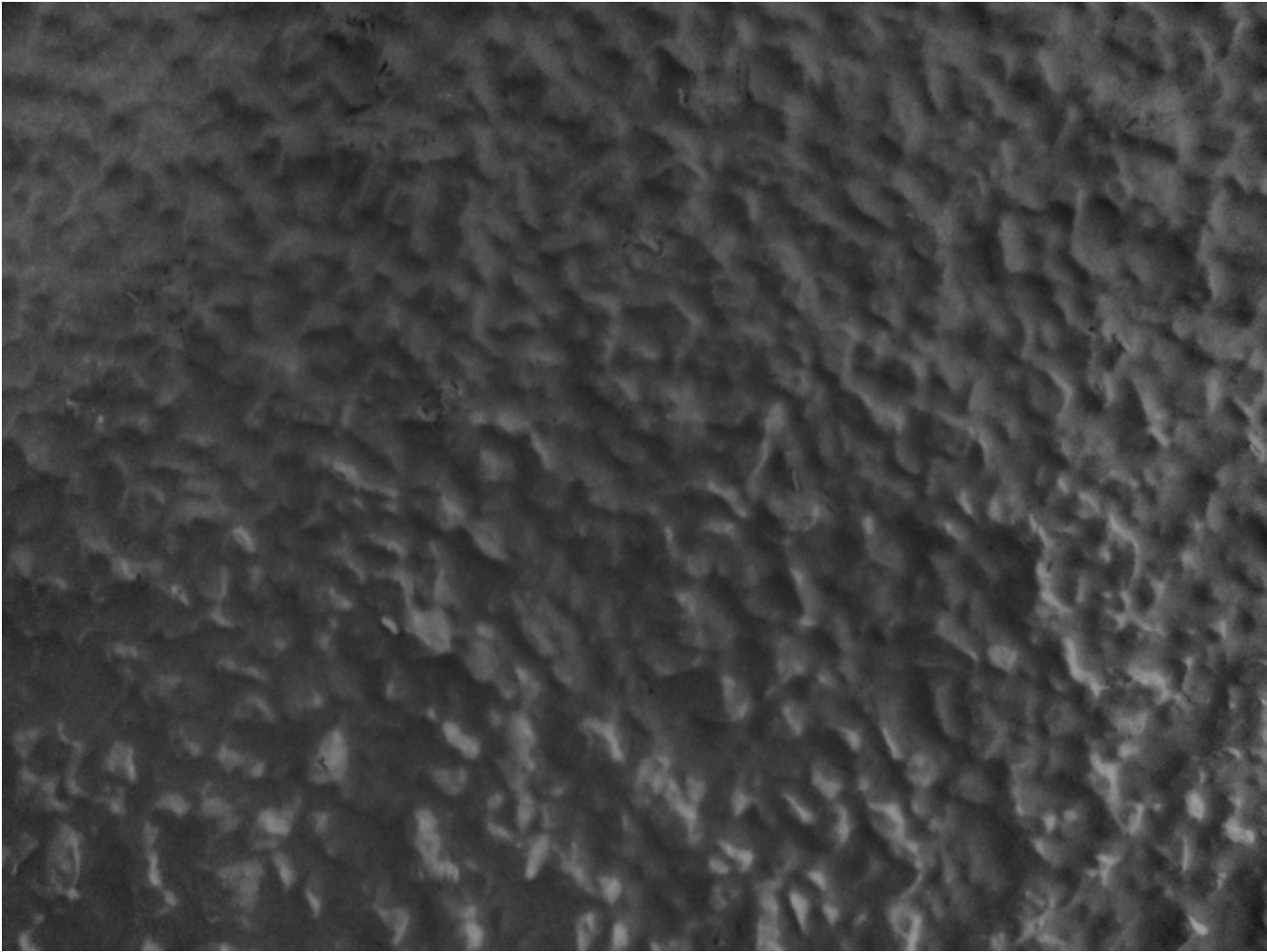
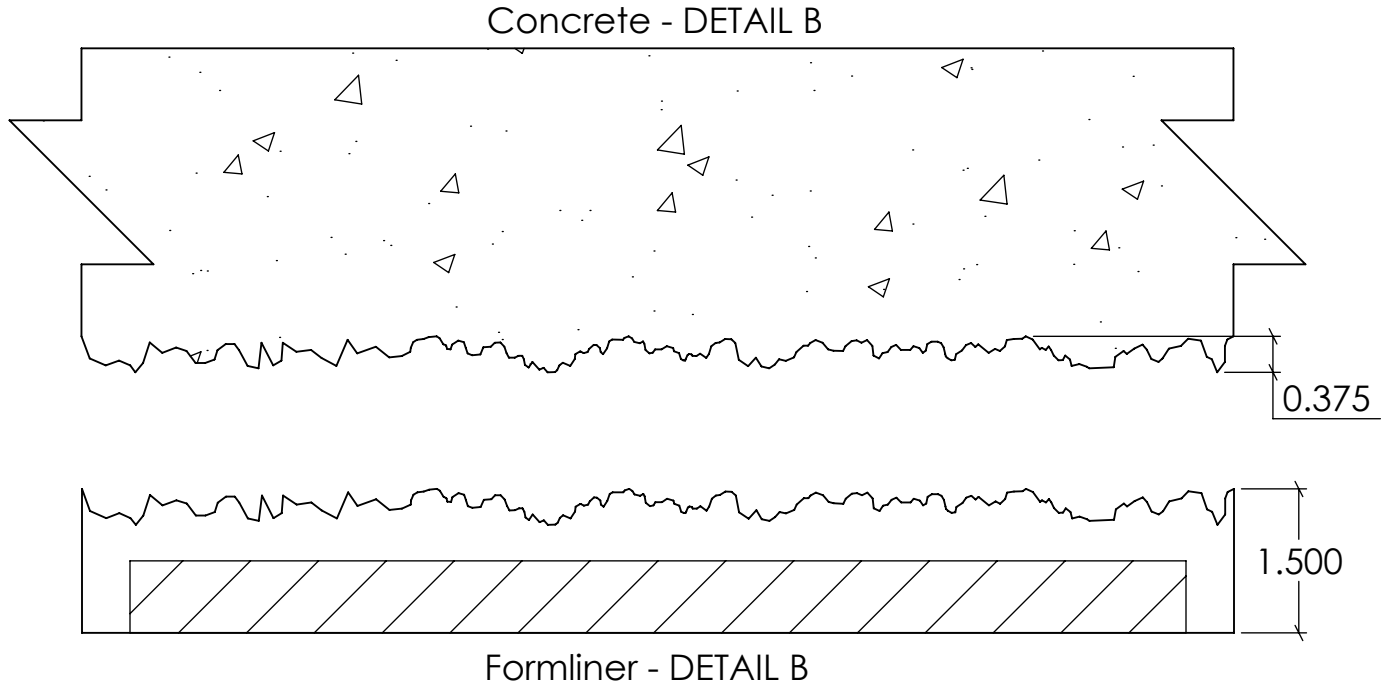
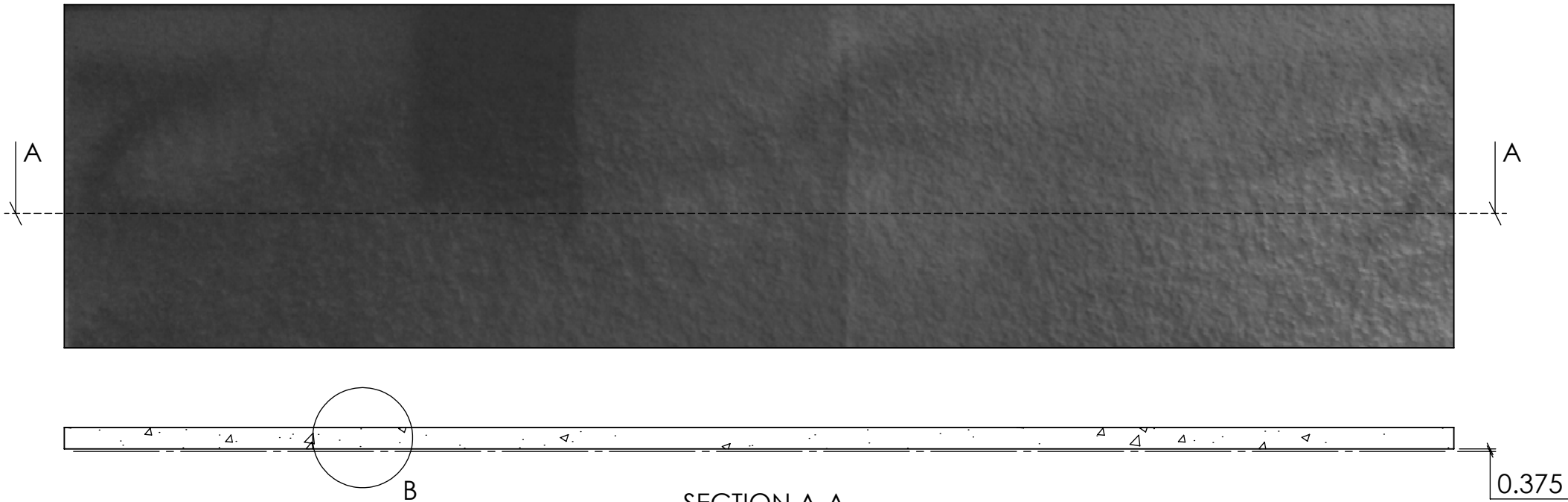
16009Concrete

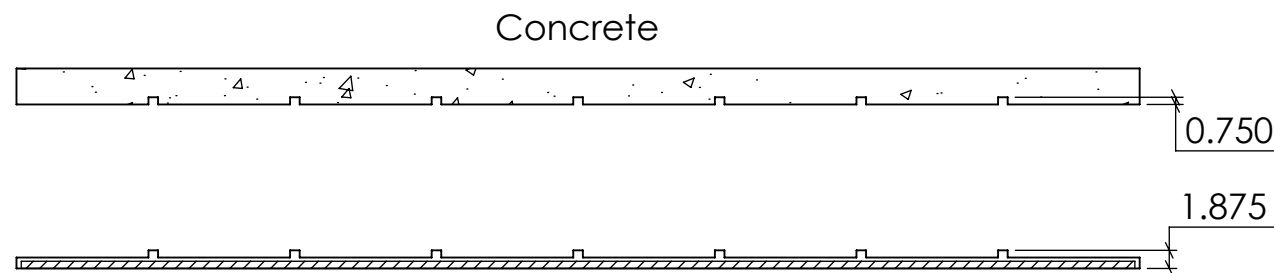
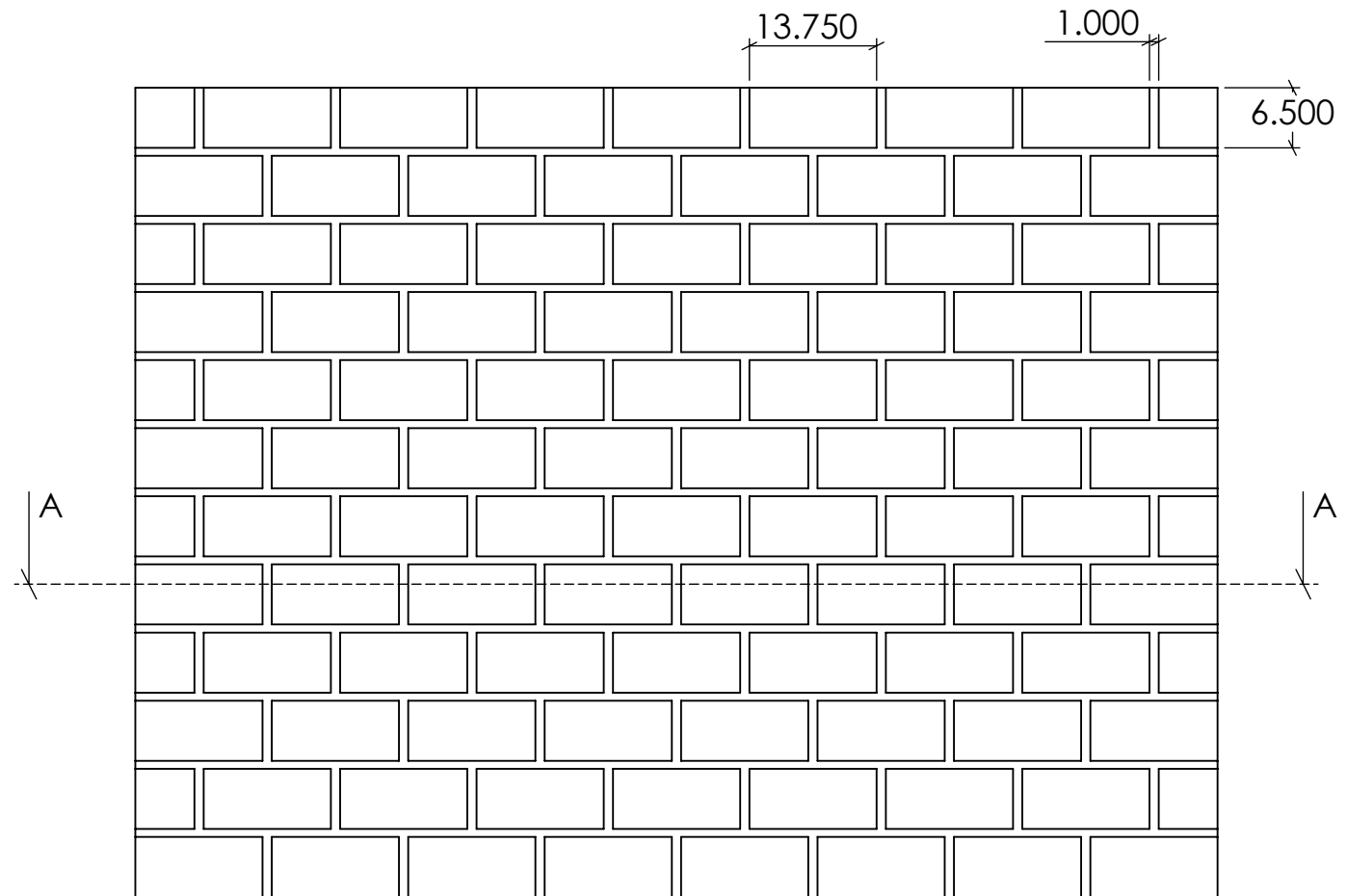
REV. 4/15/2015

NOTES:

APPROVAL SIGNATURE:

Please provide a signature in this box to indicate that this drawing has been approved and that FAST FORMLINERS may begin production.





Formliner

SECTION A-A

FAST FORMLINERS CO.
1005 Miller Drive, St. Clair, MO 63077
636-322-0080 Phone 636-322-0083 Fax
www.fastformliners.com

**Fast
Formliners Co.**

DRAWN BY: Petr L. 4/16/2015
PROPRIETARY AND CONFIDENTIAL
THE INFORMATION CONTAINED IN THIS
DRAWING IS THE SOLE PROPERTY OF
FAST FORMLINERS. ANY
REPRODUCTION IN PART OR AS A WHOLE
WITHOUT THE WRITTEN PERMISSION OF
FAST FORMLINERS IS PROHIBITED.

SHEET SIZE
11"x17"
DO NOT
SCALE
SHEET 1 OF 1

16016

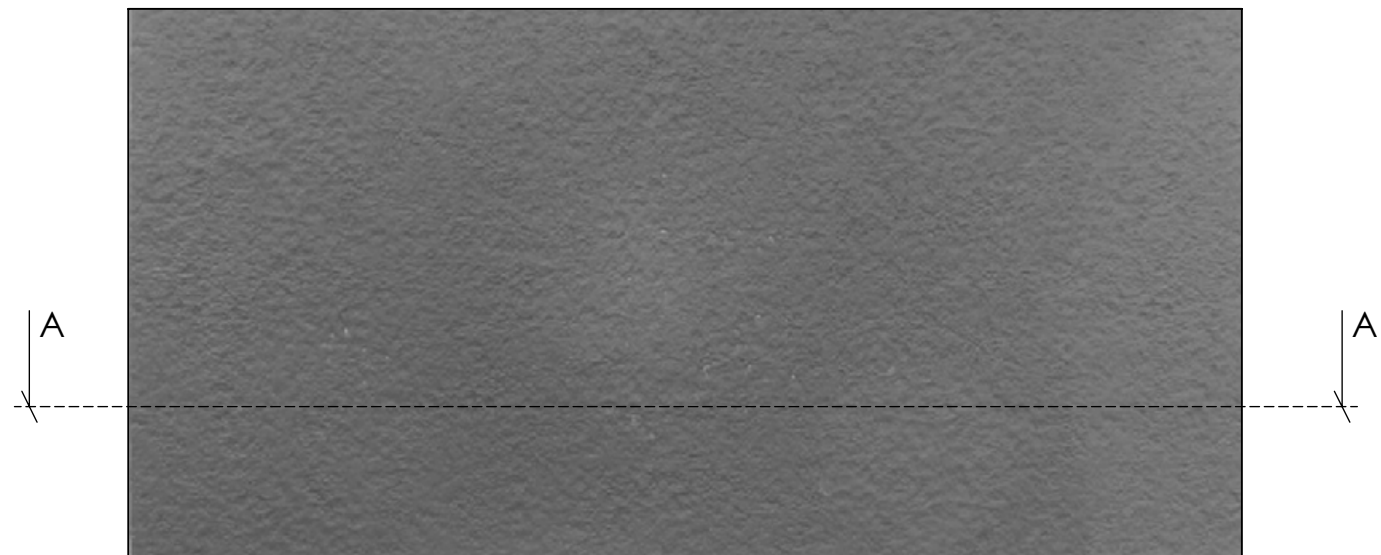
16016Concrete

REV. 4/16/2015

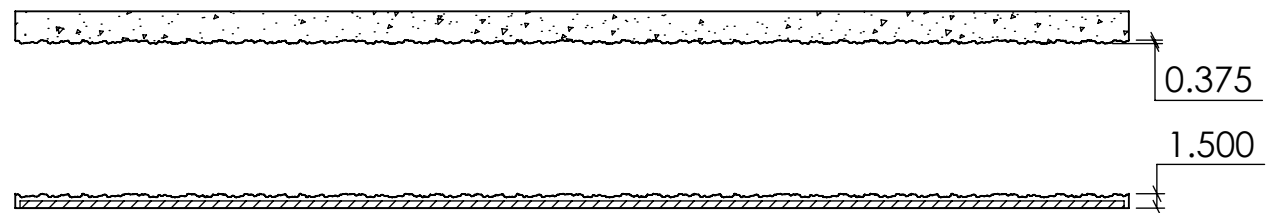
NOTES:

APPROVAL SIGNATURE:

Please provide a signature in this box to indicate that this drawing has been approved and that FAST FORMLINERS may begin production.



Concrete



Formliner
SECTION A-A



FAST FORMLINERS CO.
1005 Miller Drive, St. Clair, MO 63077
636-322-0080 Phone 636-322-0083 Fax
www.fastformliners.com

**Fast
Formliners Co.**

DRAWN BY: Petr L. 4/16/2015
PROPRIETARY AND CONFIDENTIAL
THE INFORMATION CONTAINED IN THIS
DRAWING IS THE SOLE PROPERTY OF
FAST FORMLINERS. ANY
REPRODUCTION IN PART OR AS A WHOLE
WITHOUT THE WRITTEN PERMISSION OF
FAST FORMLINERS IS PROHIBITED.

SHEET SIZE
11"x17"
DO NOT
SCALE
SHEET 1 OF 1

16019

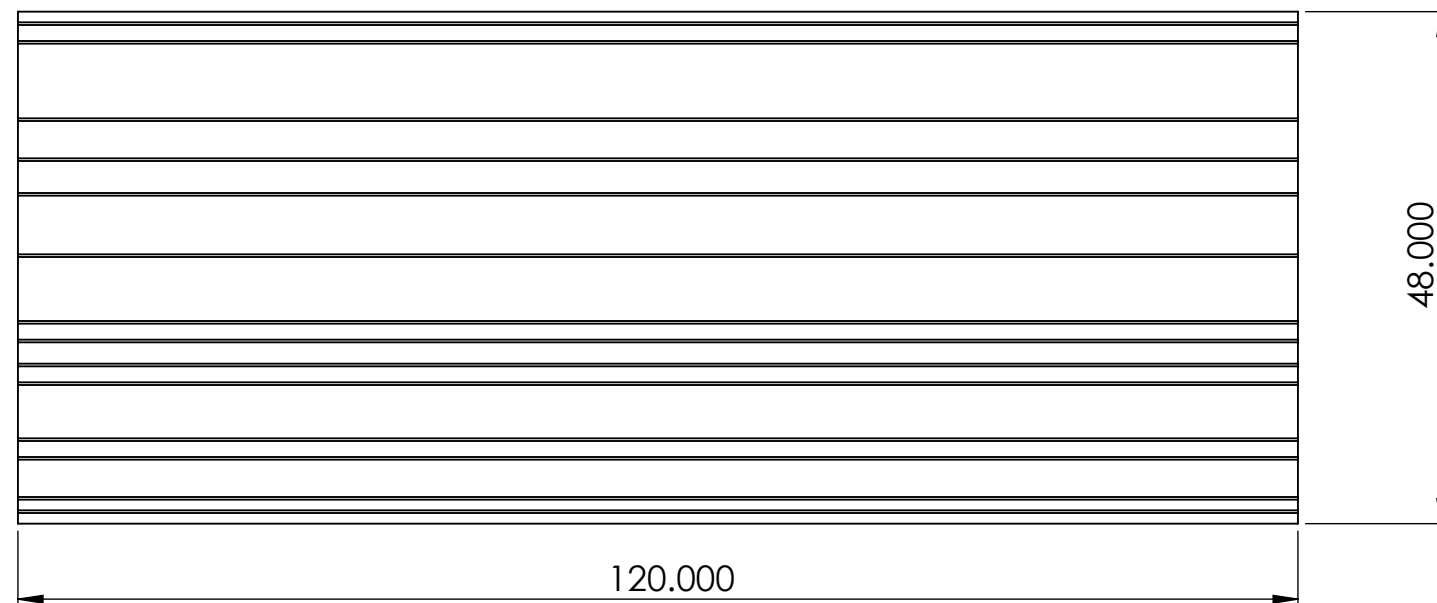
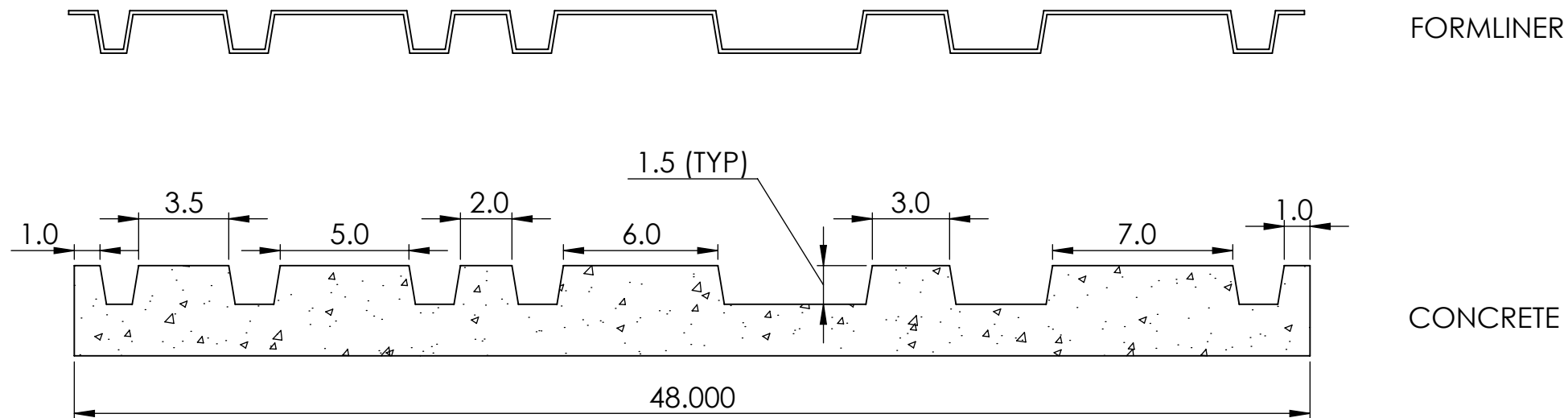
16019Concrete

REV. 4/16/2015

NOTES:

APPROVAL SIGNATURE:

Please provide a signature in this box to indicate that this drawing has been approved and that FAST FORMLINERS may begin production.



FAST FORMLINERS CO.
1005 Miller Drive, St. Clair, MO 63077
636-322-0080 Phone 636-322-0083 Fax
www.fastformliners.com

**Fast
Formliners Co.**

DRAWN BY: Petr L. 2/6/2015
PROPRIETARY AND CONFIDENTIAL
THE INFORMATION CONTAINED IN THIS
DRAWING IS THE SOLE PROPERTY OF
FAST FORMLINERS. ANY
REPRODUCTION IN PART OR AS A WHOLE
WITHOUT THE WRITTEN PERMISSION OF
FAST FORMLINERS IS PROHIBITED.

SHEET SIZE:
11"x17"
DO NOT
SCALE
SHEET 1 OF 1

Pattern 18187 - Random Reveals
1.5" Max. Relief

18187

REV. 4/16/2015

NOTES:

APPROVAL SIGNATURE:

Please provide a signature in this box to indicate that this drawing has been approved and that FAST FORMLINERS may begin production.