

FAST FORMLINERS CO.
 1005 Miller Drive, St. Clair, MO 63077
 636-322-0080 Phone 636-322-0083 Fax
 www.fastformliners.com



DRAWN BY: Petr L. 9/7/2010
PROPRIETARY AND CONFIDENTIAL
 THE INFORMATION CONTAINED IN THIS
 DRAWING IS THE SOLE PROPERTY OF
 FAST FORMLINERS. ANY
 REPRODUCTION IN PART OR AS A WHOLE
 WITHOUT THE WRITTEN PERMISSION OF
 FAST FORMLINERS IS PROHIBITED.

SHEET SIZE
11"x17"
 DO NOT
 SCALE
 SHEET 1 OF 1

17007

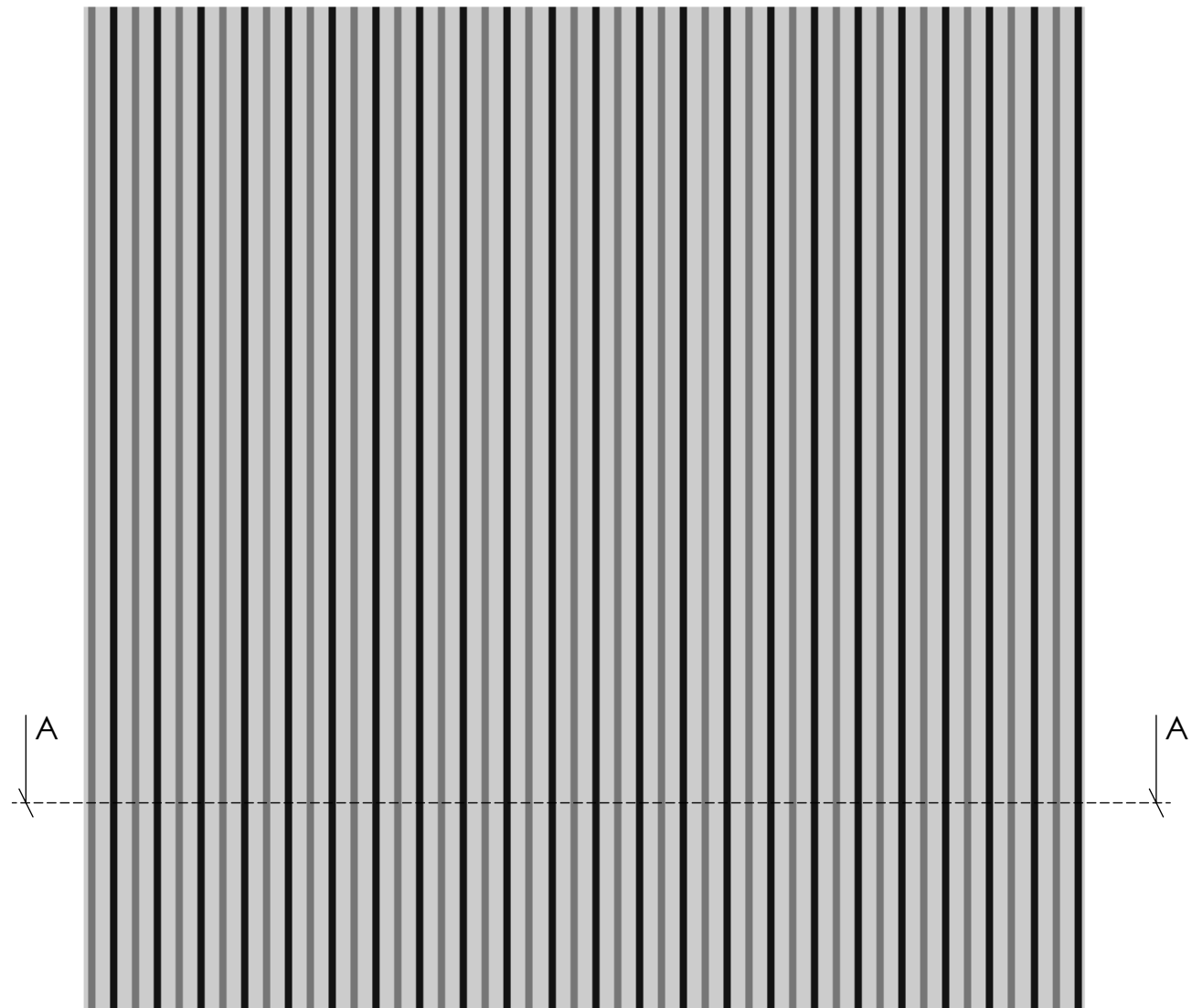
17007Concrete

REV. 4/15/2015

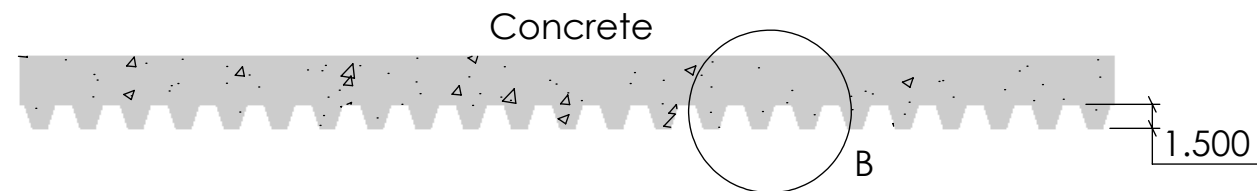
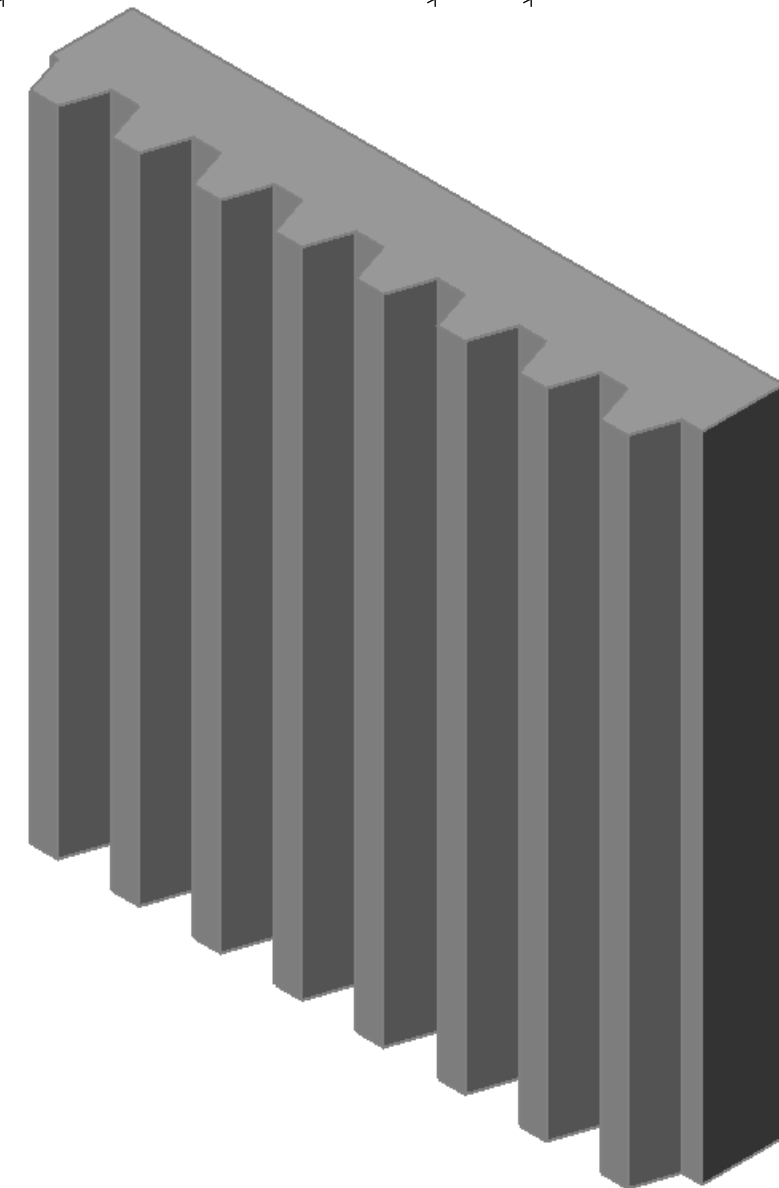
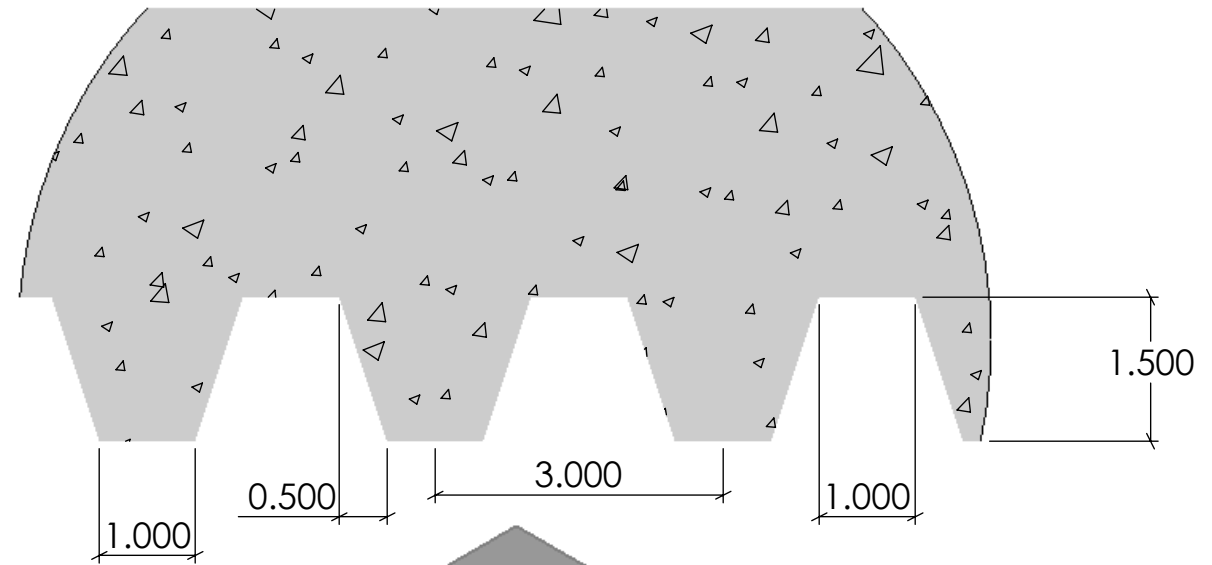
NOTES:

APPROVAL SIGNATURE:

Please provide a signature in this box to indicate that this drawing has been approved and that FAST FORMLINERS may begin production.



DETAIL B
SCALE 1 : 2



SECTION A-A
SCALE 1 : 12

FAST FORMLINERS CO.
1005 Miller Drive, St. Clair, MO 63077
636-322-0080 Phone 636-322-0083 Fax
www.fastformliners.com



DRAWN BY: Petr L. 4/17/2015
PROPRIETARY AND CONFIDENTIAL
THE INFORMATION CONTAINED IN THIS
DRAWING IS THE SOLE PROPERTY OF
FAST FORMLINERS. ANY
REPRODUCTION IN PART OR AS A WHOLE
WITHOUT THE WRITTEN PERMISSION OF
FAST FORMLINERS IS PROHIBITED.

SHEET SIZE
11"x17"
DO NOT
SCALE
SHEET 1 OF 1

17008

17008Concrete

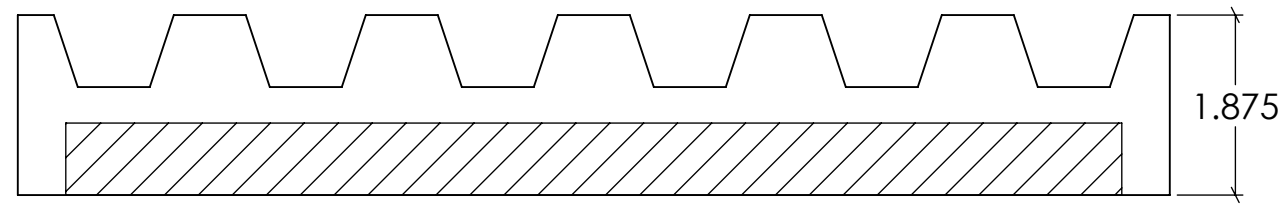
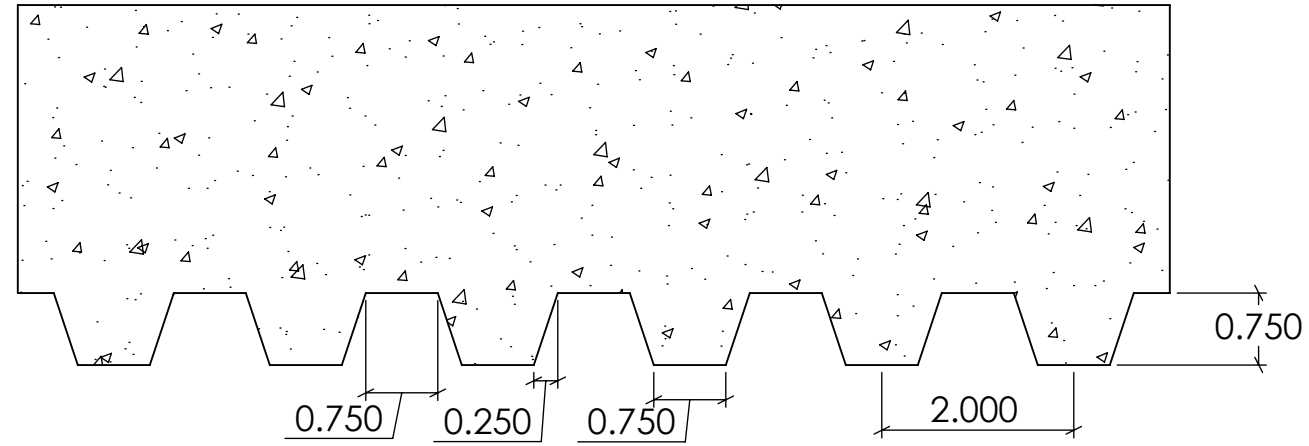
REV. 4/17/2015

NOTES:

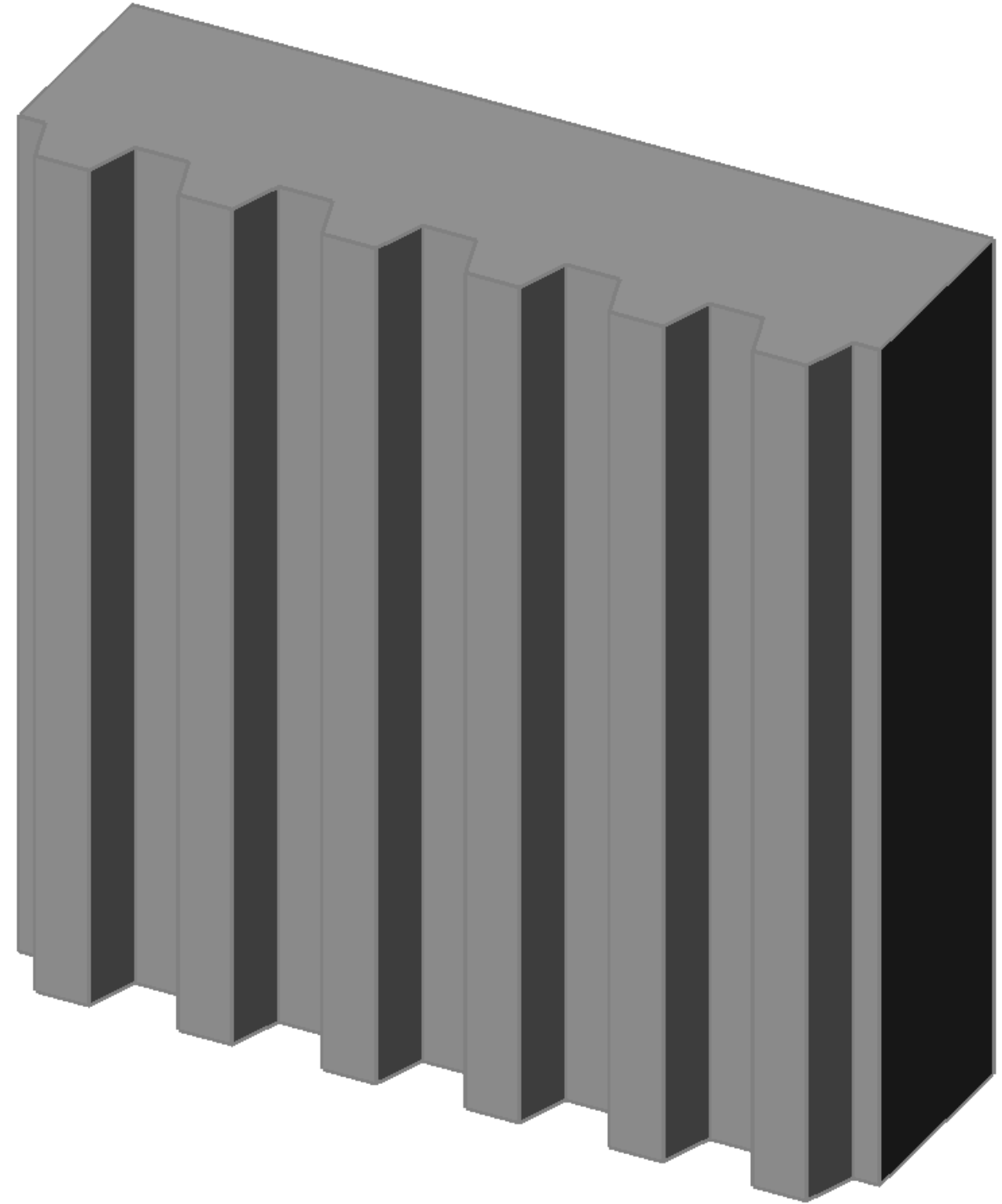
APPROVAL SIGNATURE:

Please provide a signature in this box to indicate that this drawing has been approved and that FAST FORMLINERS may begin production.

Concrete



Formliner



FAST FORMLINERS

1005 Miller Drive, St. Clair, MO 63077
636-322-0080 Phone 636-322-0083 Fax
www.fastformliners.com



DRAWN BY: Petr L. 10/24/2014

PROPRIETARY AND CONFIDENTIAL
THE INFORMATION CONTAINED IN THIS
DRAWING IS THE SOLE PROPERTY OF
FAST FORMLINERS. ANY
REPRODUCTION IN PART OR AS A WHOLE
WITHOUT THE WRITTEN PERMISSION OF
FAST FORMLINERS IS PROHIBITED.

SHEET SIZE

11"x17"

DO NOT
SCALE

SHEET 1 OF 1

17011

17011Concrete

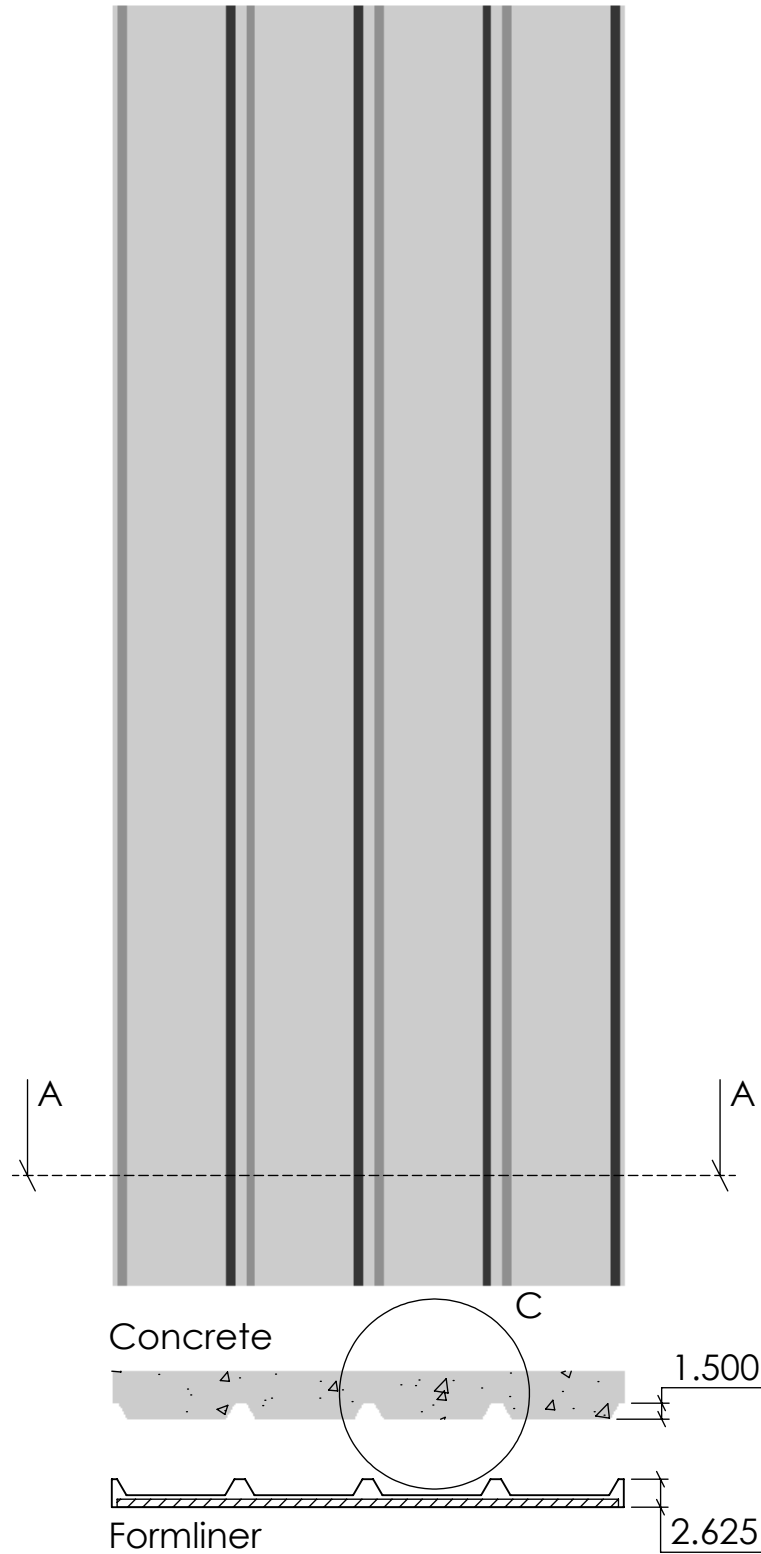
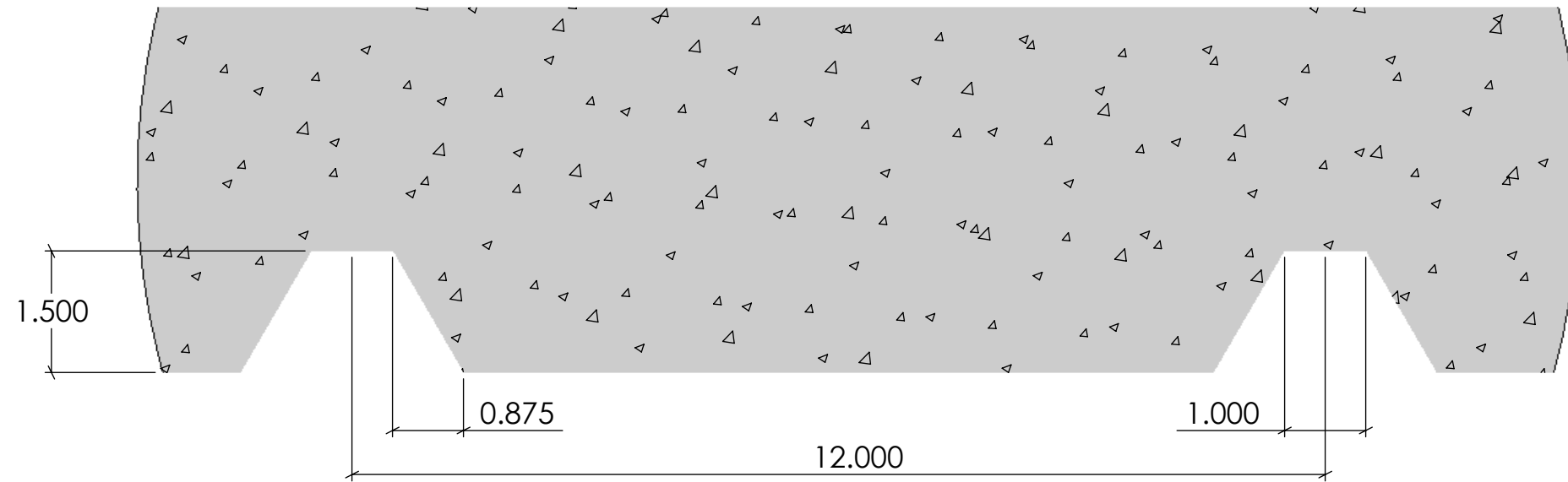
REV. 10/24/2014

NOTES:

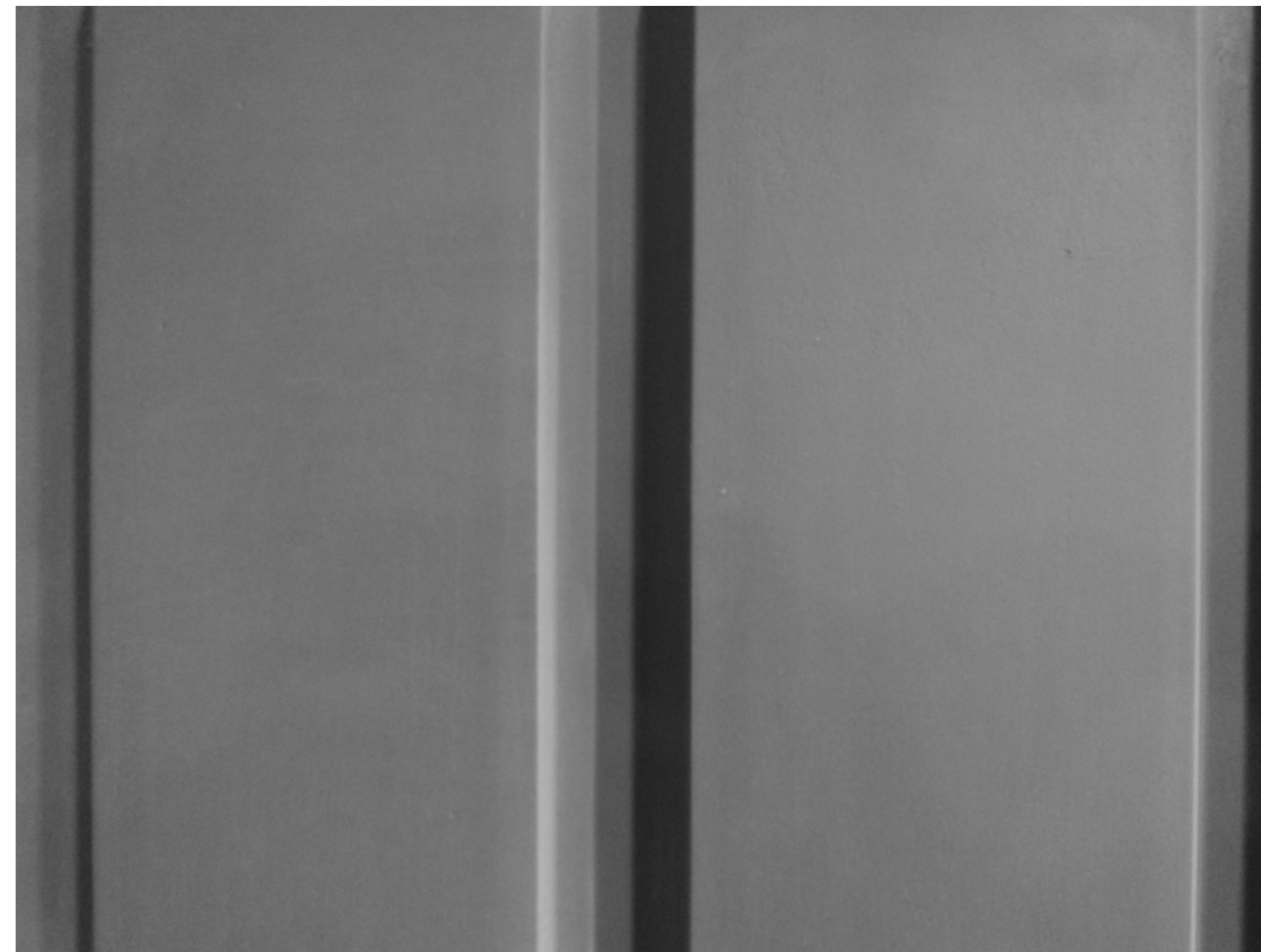
APPROVAL SIGNATURE:

Please provide a signature in this box to indicate that this drawing has been approved and that FAST FORMLINERS may begin production.

DETAIL C
SCALE 1 : 2



SECTION A-A
SCALE 1 : 18



FAST FORMLINERS CO.
1005 Miller Drive, St. Clair, MO 63077
636-322-0080 Phone 636-322-0083 Fax
www.fastformliners.com

**Fast
Formliners Co.**

DRAWN BY: Petr L. 4/17/2015
PROPRIETARY AND CONFIDENTIAL
THE INFORMATION CONTAINED IN THIS
DRAWING IS THE SOLE PROPERTY OF
FAST FORMLINERS. ANY
REPRODUCTION IN PART OR AS A WHOLE
WITHOUT THE WRITTEN PERMISSION OF
FAST FORMLINERS IS PROHIBITED.

SHEET SIZE
11"x17"
DO NOT
SCALE
SHEET 1 OF 1

17015

17015Concrete

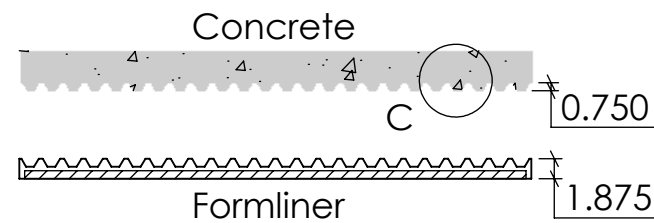
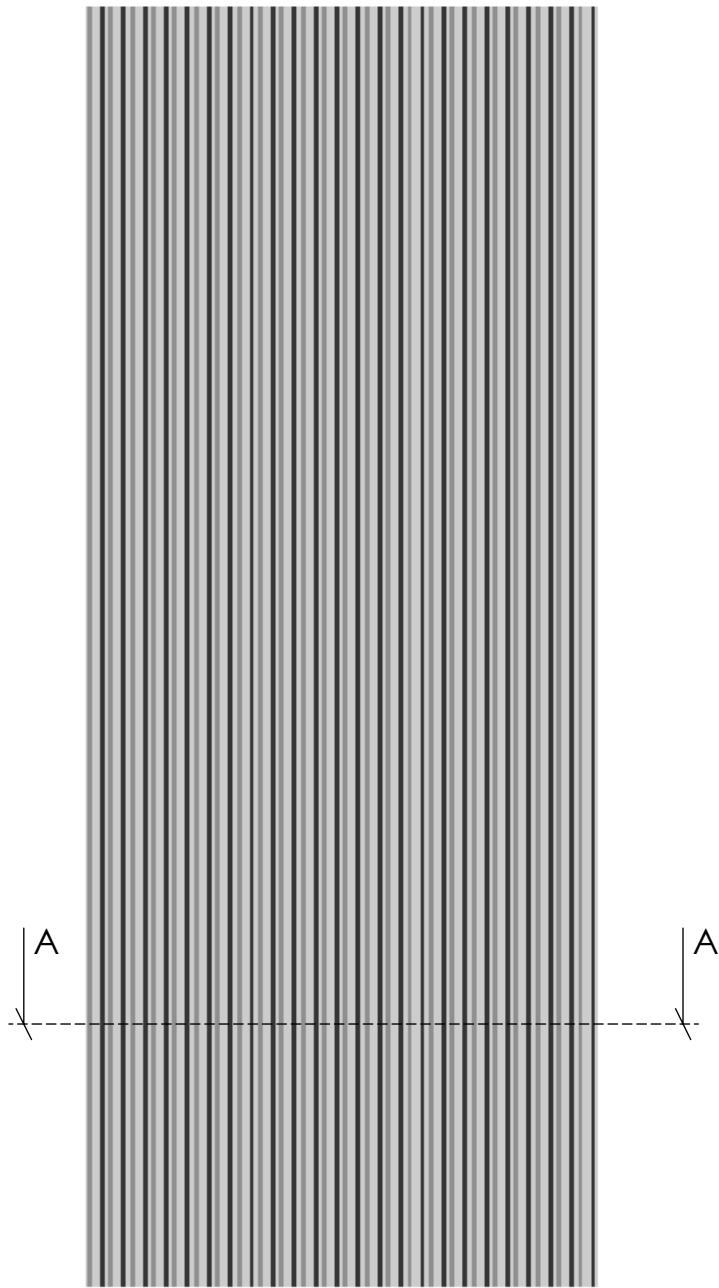
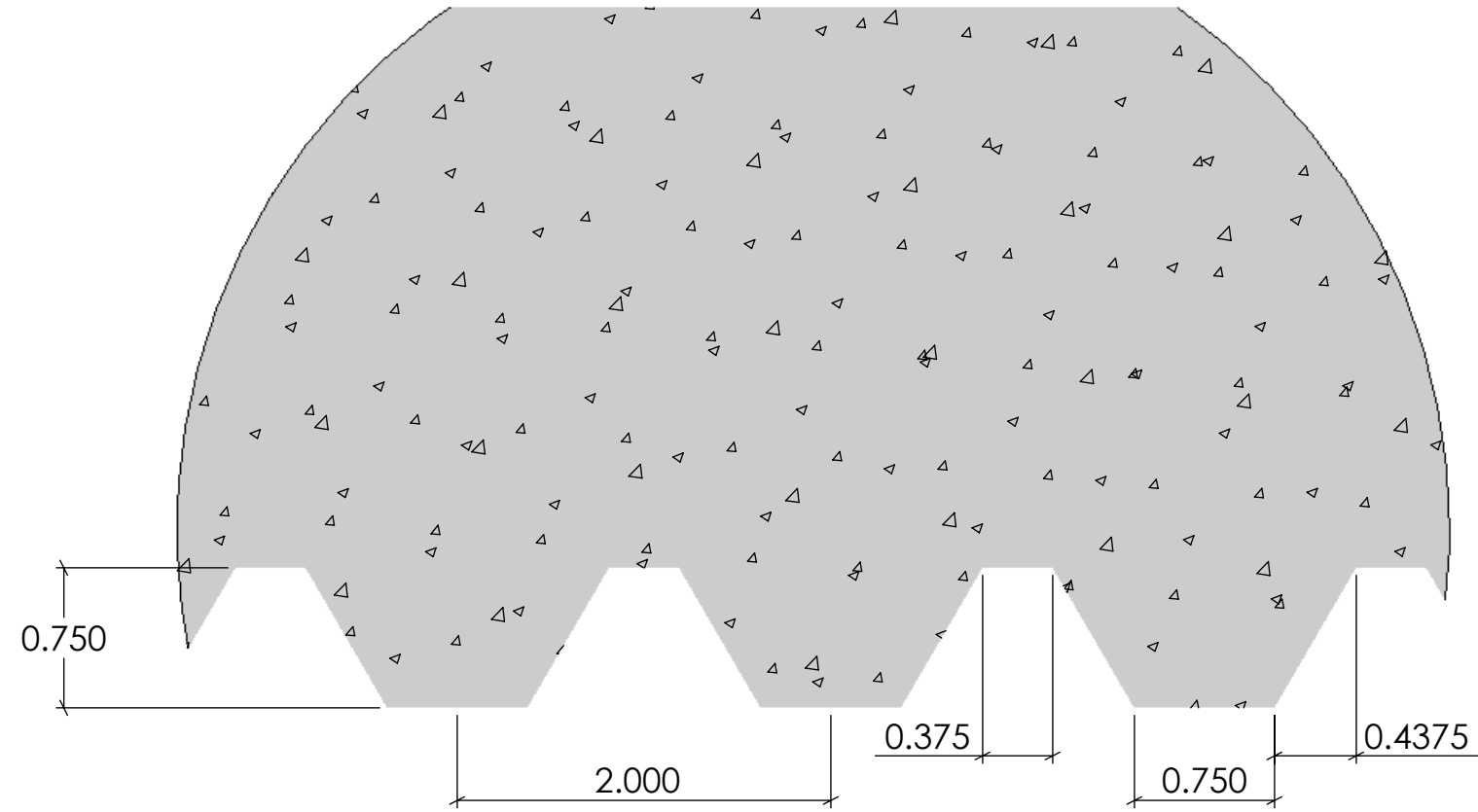
REV. 4/17/2015

NOTES:

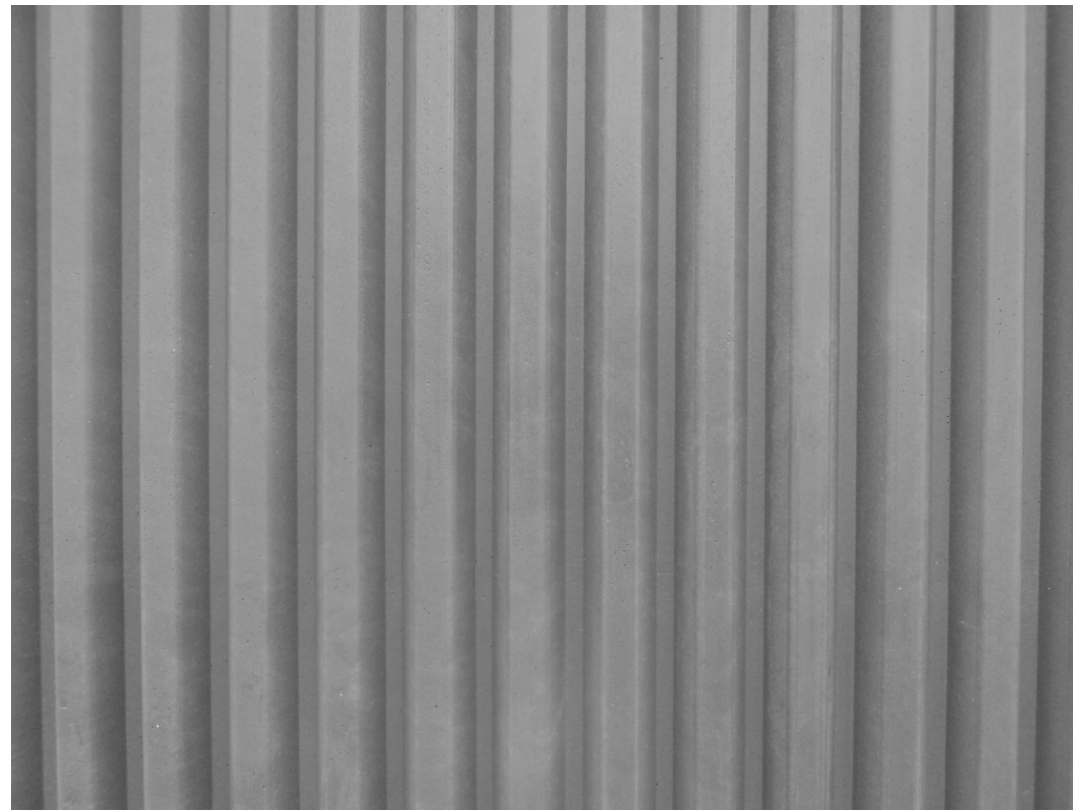
APPROVAL SIGNATURE:

Please provide a signature in this box to indicate that this drawing has been approved and that FAST FORMLINERS may begin production.

DETAIL C
SCALE 1 : 1



SECTION A-A
SCALE 1 : 18



FAST FORMLINERS CO.
1005 Miller Drive, St. Clair, MO 63077
636-322-0080 Phone 636-322-0083 Fax
www.fastformliners.com

**Fast
Formliners Co.**

DRAWN BY: Petr L. 4/20/2015
PROPRIETARY AND CONFIDENTIAL
THE INFORMATION CONTAINED IN THIS
DRAWING IS THE SOLE PROPERTY OF
FAST FORMLINERS. ANY
REPRODUCTION IN PART OR AS A WHOLE
WITHOUT THE WRITTEN PERMISSION OF
FAST FORMLINERS IS PROHIBITED.

SHEET SIZE
11"x17"
DO NOT
SCALE
SHEET 1 OF 1

17016

17016Concrete

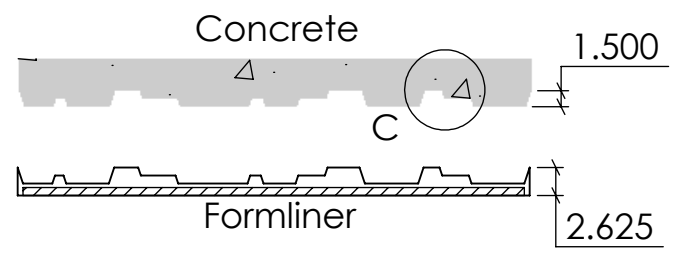
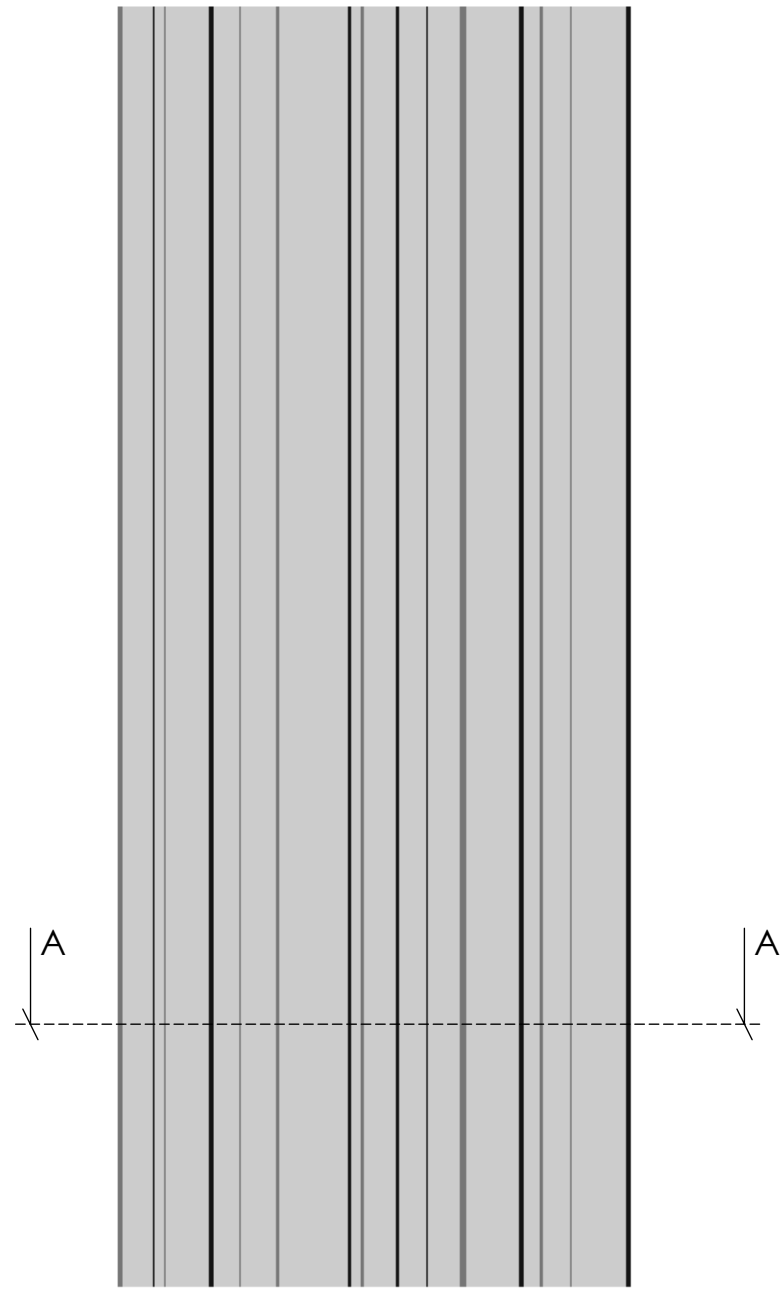
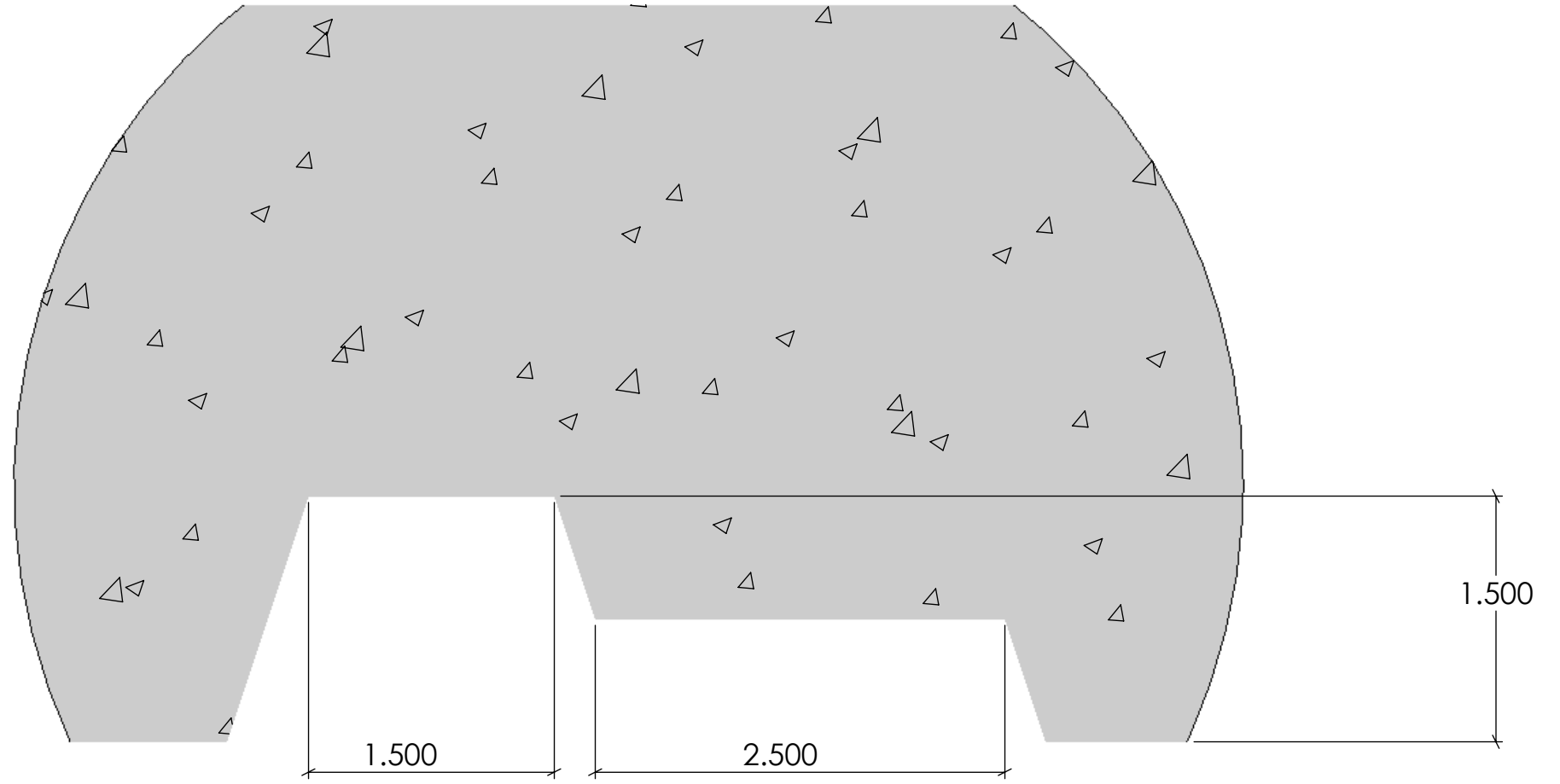
REV. 4/20/2015

NOTES:

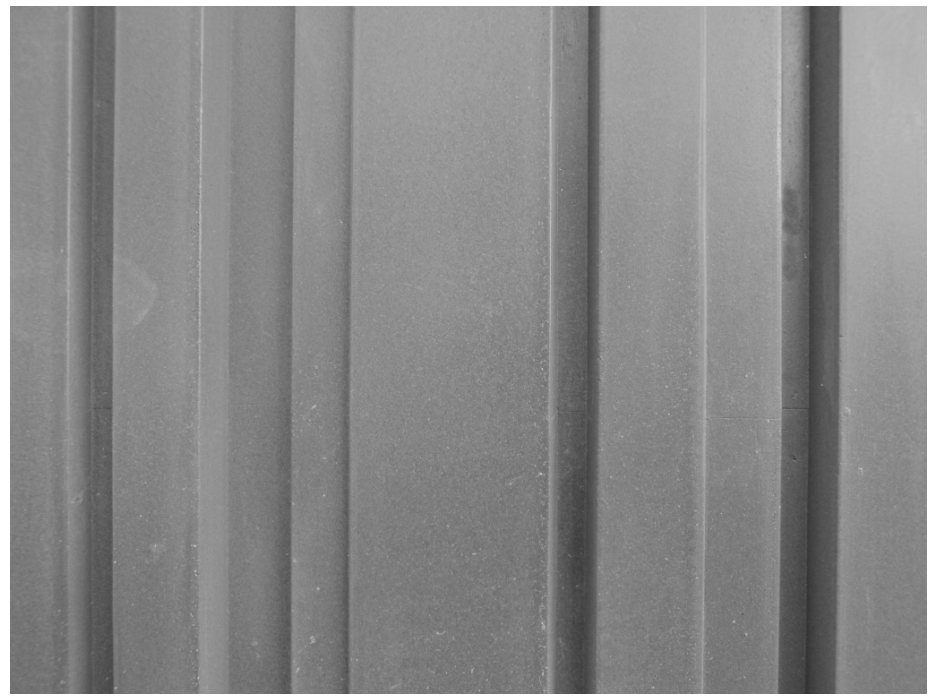
APPROVAL SIGNATURE:

Please provide a signature in this box to indicate that this drawing has been approved and that FAST FORMLINERS may begin production.

DETAIL C
SCALE 1 : 1



SECTION A-A
SCALE 1 : 18



FAST FORMLINERS CO.
1005 Miller Drive, St. Clair, MO 63077
636-322-0080 Phone 636-322-0083 Fax
www.fastformliners.com



DRAWN BY: Petr L. 4/20/2015
PROPRIETARY AND CONFIDENTIAL
THE INFORMATION CONTAINED IN THIS
DRAWING IS THE SOLE PROPERTY OF
FAST FORMLINERS. ANY
REPRODUCTION IN PART OR AS A WHOLE
WITHOUT THE WRITTEN PERMISSION OF
FAST FORMLINERS IS PROHIBITED.

SHEET SIZE
11"x17"
DO NOT
SCALE
SHEET 1 OF 1

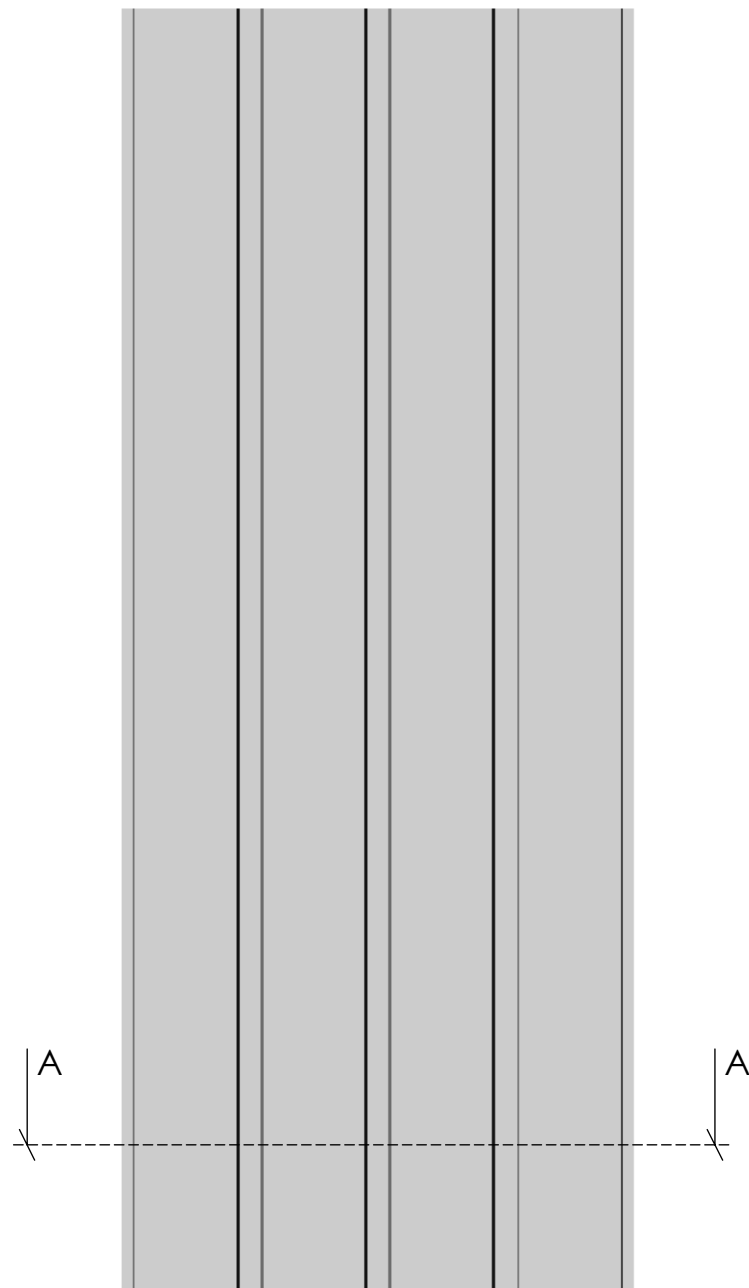
17017

17017Concrete REV. 4/21/2015

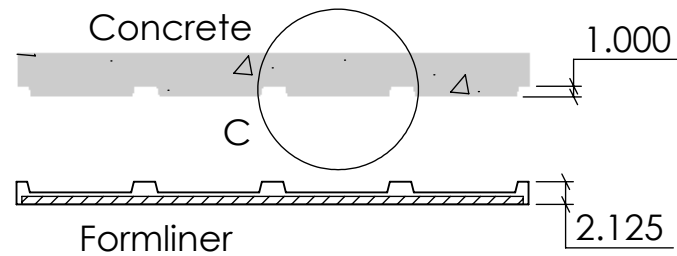
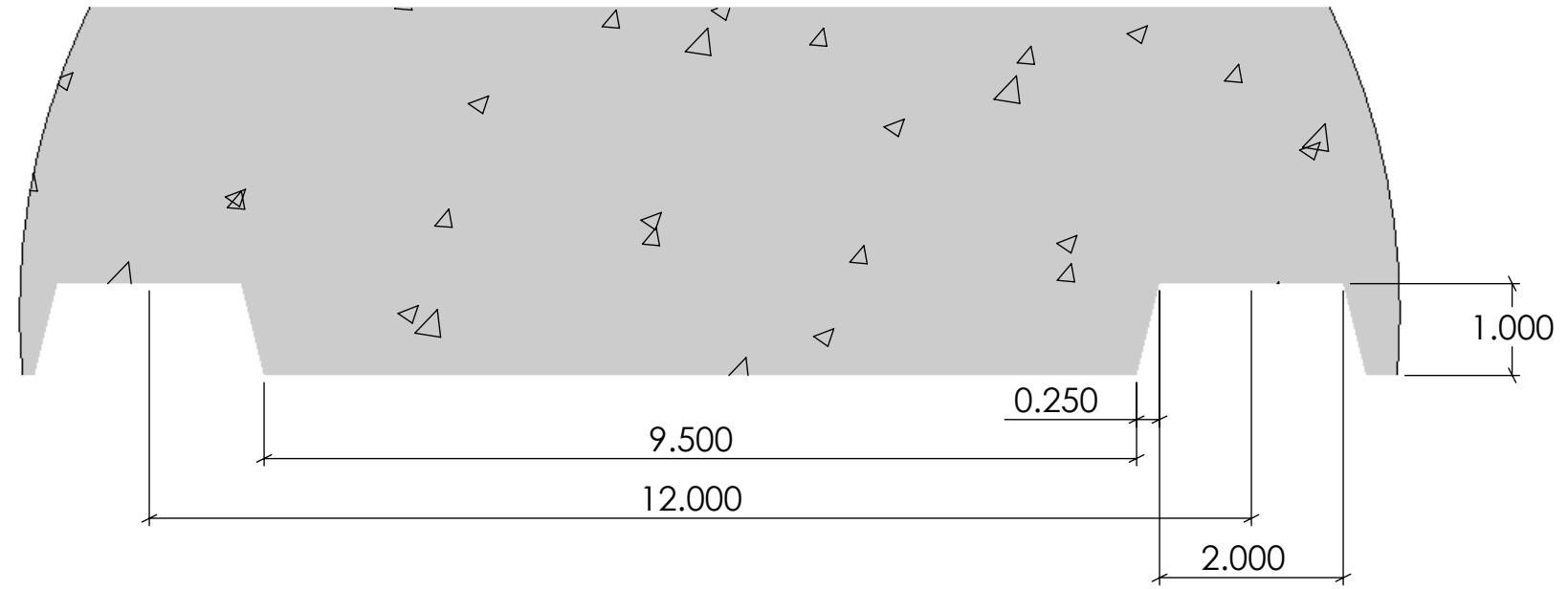
NOTES:

APPROVAL SIGNATURE:

Please provide a signature in this box to indicate that this drawing has been approved and that FAST FORMLINERS may begin production.



DETAIL C
SCALE 1 : 2



SECTION A-A
SCALE 1 : 18



FAST FORMLINERS CO.
1005 Miller Drive, St. Clair, MO 63077
636-322-0080 Phone 636-322-0083 Fax
www.fastformliners.com



DRAWN BY: Petr L. 4/21/2015
PROPRIETARY AND CONFIDENTIAL
THE INFORMATION CONTAINED IN THIS
DRAWING IS THE SOLE PROPERTY OF
FAST FORMLINERS. ANY
REPRODUCTION IN PART OR AS A WHOLE
WITHOUT THE WRITTEN PERMISSION OF
FAST FORMLINERS IS PROHIBITED.

SHEET SIZE
11"x17"
DO NOT
SCALE
SHEET 1 OF 1

17018

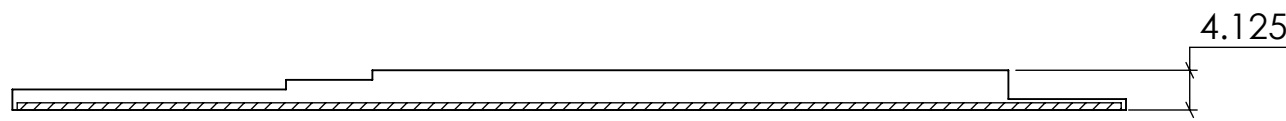
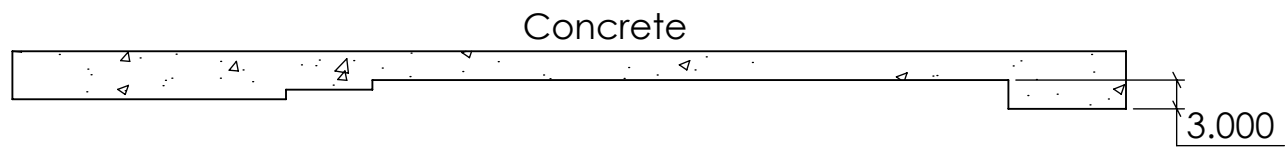
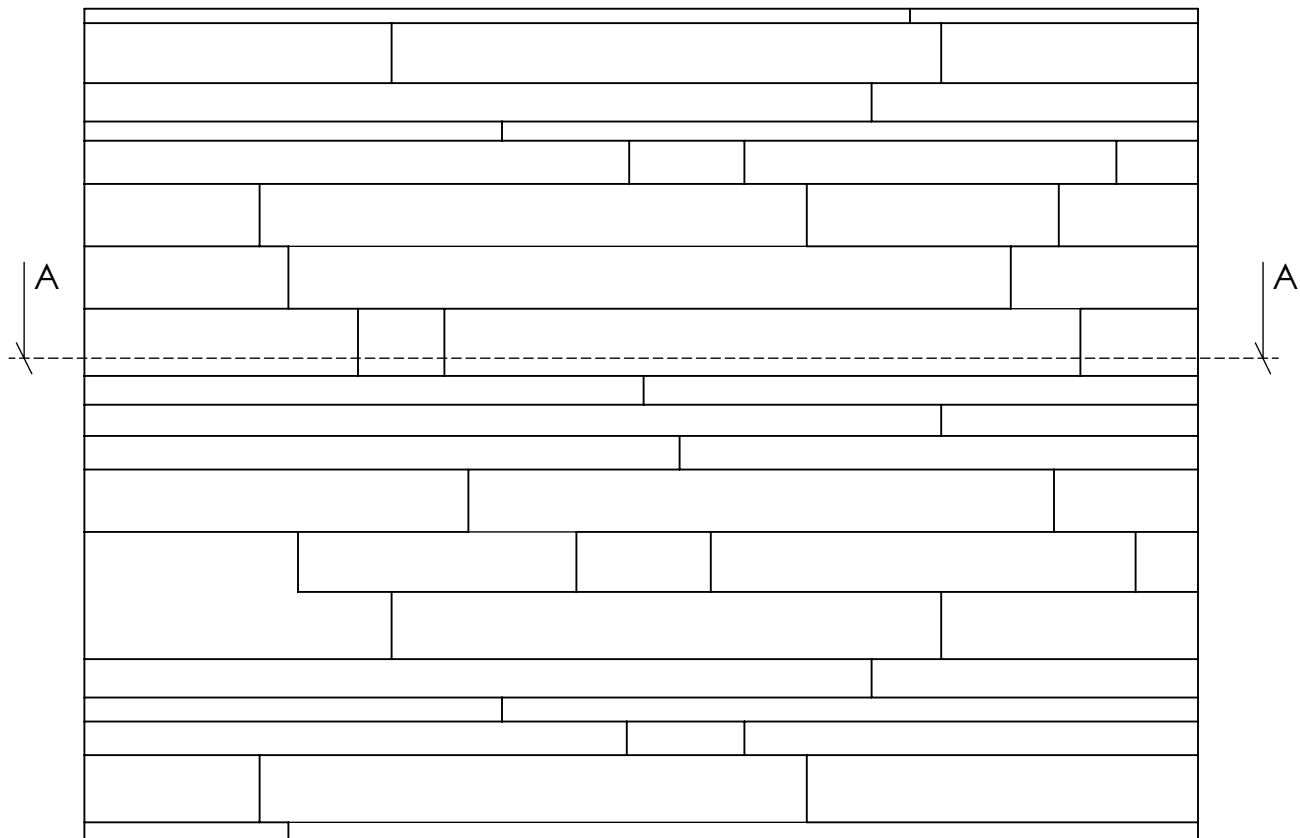
17018Concrete

REV. 4/21/2015

NOTES:

APPROVAL SIGNATURE:

Please provide a signature in this box to indicate that this drawing has been approved and that FAST FORMLINERS may begin production.



SECTION A-A

FAST FORMLINERS CO.
 1005 Miller Drive, St. Clair, MO 63077
 636-322-0080 Phone 636-322-0083 Fax
 www.fastformliners.com



DRAWN BY: Petr L. 4/21/2015
PROPRIETARY AND CONFIDENTIAL
 THE INFORMATION CONTAINED IN THIS
 DRAWING IS THE SOLE PROPERTY OF
 FAST FORMLINERS. ANY
 REPRODUCTION IN PART OR AS A WHOLE
 WITHOUT THE WRITTEN PERMISSION OF
 FAST FORMLINERS IS PROHIBITED.

SHEET SIZE
11"x17"
DO NOT SCALE
SHEET 1 OF 1

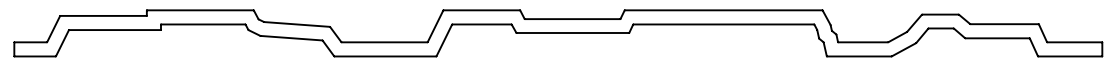
17019

17019aConcrete REV. 4/21/2015

NOTES:

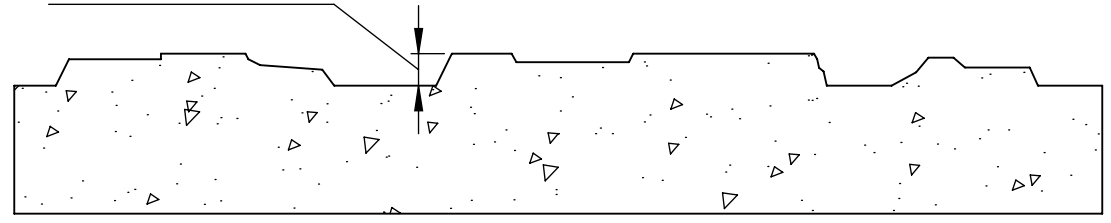
APPROVAL SIGNATURE:

Please provide a signature in this box to indicate that this drawing has been approved and that FAST FORMLINERS may begin production.



FORMLINER
Plastic Liner Size: 4'x10'

0.250" Max. Slate
Texture Relief



CONCRETE



FAST FORMLINERS CO.
1005 Miller Drive, St. Clair, MO 63077
636-322-0080 Phone 636-322-0083 Fax
www.fastformliners.com



DRAWN BY: Petr L. 3/12/2015
PROPRIETARY AND CONFIDENTIAL
THE INFORMATION CONTAINED IN THIS
DRAWING IS THE SOLE PROPERTY OF
FAST FORMLINERS. ANY
REPRODUCTION IN PART OR AS A WHOLE
WITHOUT THE WRITTEN PERMISSION OF
FAST FORMLINERS IS PROHIBITED.

SHEET SIZE
11"x17"
DO NOT
SCALE
SHEET 1 OF 1

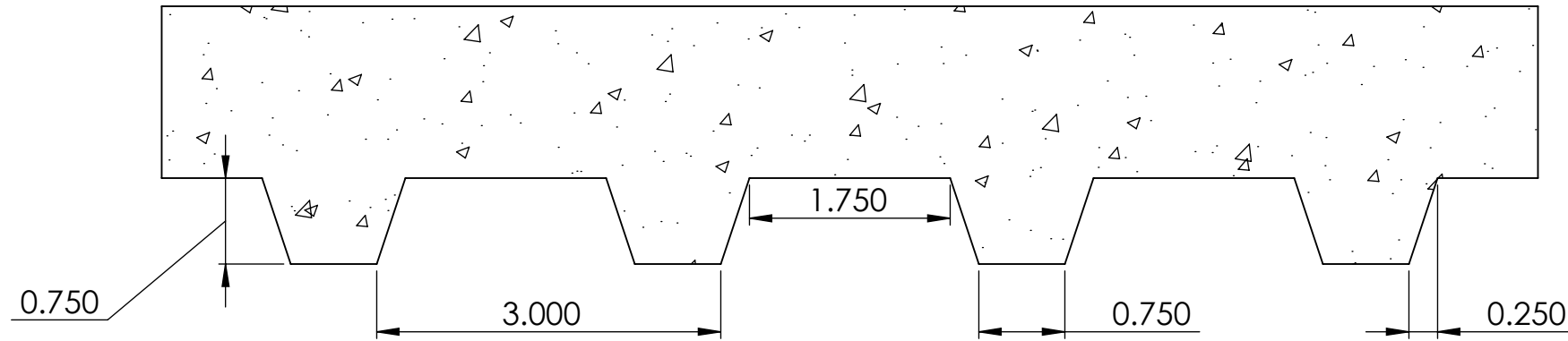
Pattern 18086

18086 REV. 3/12/2015

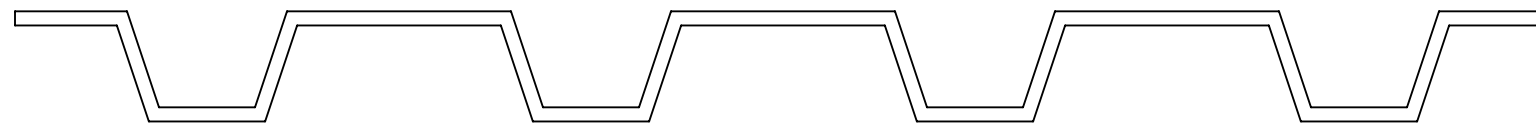
NOTES:

APPROVAL SIGNATURE:

Please provide a signature in this box to indicate that this drawing has been approved and that FAST FORMLINERS may begin production.



CONCRETE



FORMLINER

FAST FORMLINERS CO.
 1005 Miller Drive, St. Clair, MO 63077
 636-322-0080 Phone 636-322-0083 Fax
 www.fastformliners.com



DRAWN BY: Petr L. 2/23/2015
PROPRIETARY AND CONFIDENTIAL
 THE INFORMATION CONTAINED IN THIS
 DRAWING IS THE SOLE PROPERTY OF
 FAST FORMLINERS. ANY
 REPRODUCTION IN PART OR AS A WHOLE
 WITHOUT THE WRITTEN PERMISSION OF
 FAST FORMLINERS IS PROHIBITED.

SHEET SIZE
11"x17"
 DO NOT
 SCALE
 SHEET 1 OF 1

Pattern 18457
 3/4" Relief

18457

REV. 4/16/2015

NOTES:

APPROVAL SIGNATURE:

Please provide a signature in this box to indicate that this drawing has been approved and that FAST FORMLINERS may begin production.